



Leyden Street, E1

£625,000

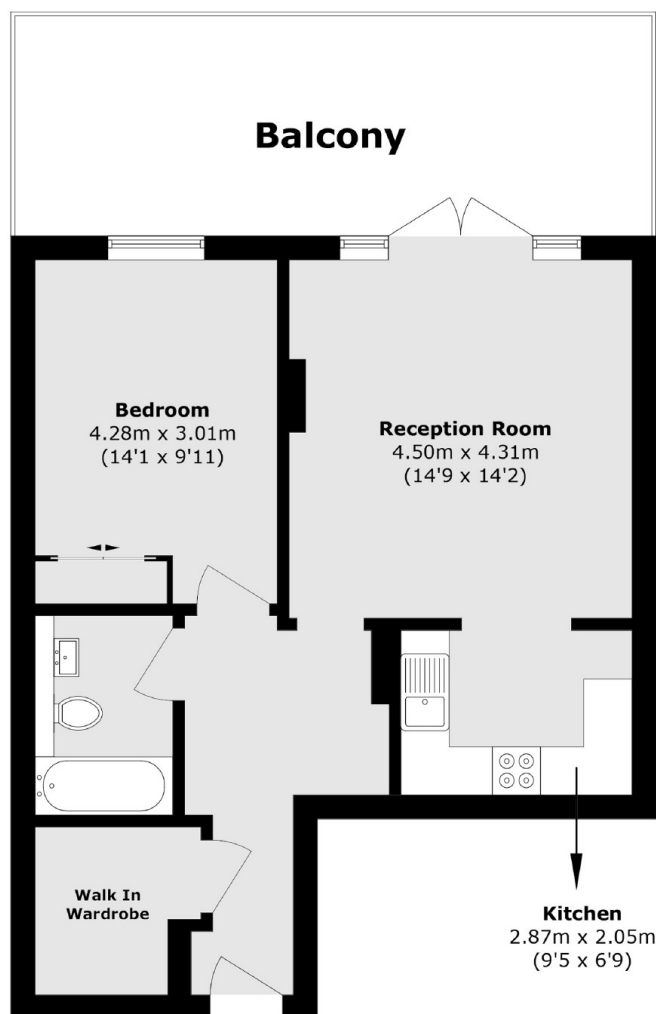
This one-bedroom, third floor apartment, is located in the attractive 'art-deco' style building, just a short distance from Spitalfields Market. Located on the fourth floor, the apartment benefits from a large private roof terrace with views of the City, an open plan kitchen/living room and a large double bedroom. This property also features a walk in wardrobe and additional built in storage space in the bedroom.

Leyden Street is situated in the heart of Liverpool Street, providing good access to many amenities including local pubs, restaurants and gyms. Well connected with easy routes into Aldgate East, Tower Bridge and Canary Wharf also providing a convenient location with transport links to all corners of the City and beyond.

Features

- One Double Bedroom
- Secure Entry
- Lift Access
- City Views
- Art Deco
- Porter

Leyden Street,
London, E1



Total area (approx.): 57.4 sq. m (617.9 sq. ft)

Balcony area (approx.): 21.5 sq. m (231.4 sq. ft)

Dexters

Shoreditch
44 Great Eastern Street
London
EC2A 3EP
Sales
0207 483 6371

Energy Rating: C. We aim to make our particulars both accurate and reliable. However they are not guaranteed; nor do they form part of an offer or contract. If you require clarification on any points then please contact us, especially if you're traveling some distance to view. Please note that appliances and heating systems have not been tested and therefore no warranties can be given as to their good working order.

 **RICS** | Regulated
Estate Agent
and Letting Agent

[dexters.co.uk](https://www.dexters.co.uk)