

## Teesdale Street, E2

### £425,000

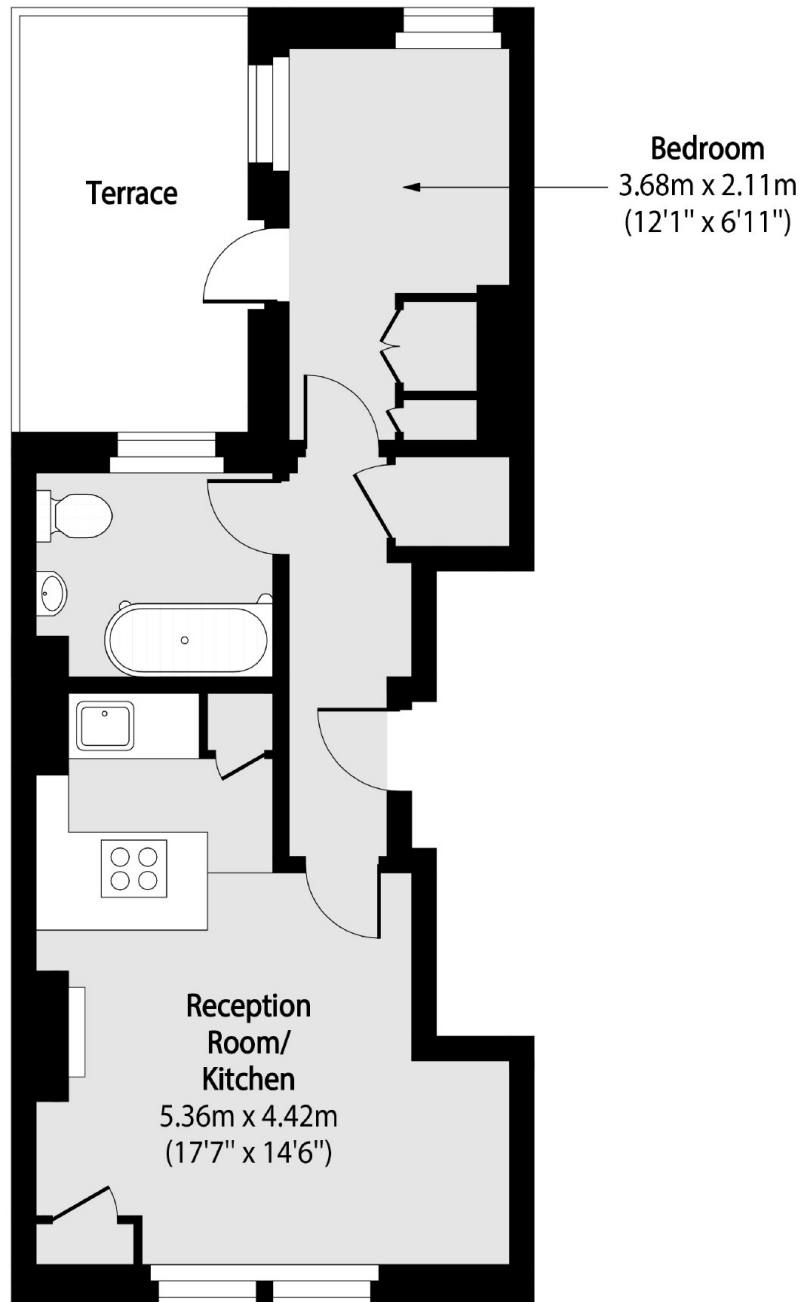
One bedroom apartment with modern interiors set within a sought after location. The property has a large, bright, open plan living room with a modernised, fully integrated kitchen with breakfast bar to dine. Moving through the apartment you find the renovated family bathroom and double bedroom with ample built in storage and this area also leads out to the properties private terrace.

Teesdale Street is one of the most prestigious streets within the postcode. It gives quick access to an array of popular bars, restaurants, shopping opportunities and further entertainment venues found in the nearby Shoreditch, the famous Columbia Road as well as London Fields. Nearby transport links include Shoreditch High Street (Overground) and Bethnal Green (Central Line) stations for simple access across the City and beyond. Regents Canal and Victoria Park are also close by for scenic walks.

### Features

- One Bedroom
- Sought After Street
- Modernised Interiors
- Private Terrace
- Period Property
- Built In Storage

Teesdale Street,  
London, E2



Total area (approx): 36.05 sq m (388 sq. ft)

Terrace total area (approx): 8.45 sq m (91 sq. ft)

**Dexters**

Shoreditch  
44 Great Eastern Street  
London  
EC2A 3EP  
Sales  
0207 483 6371

Energy Rating: . We aim to make our particulars both accurate and reliable. However they are not guaranteed; nor do they form part of an offer or contract. If you require clarification on any points then please contact us, especially if you're traveling some distance to view. Please note that appliances and heating systems have not been tested and therefore no warranties can be given as to their good working order.

 **RICS** | Regulated  
Estate Agent  
and Letting Agent

[dexters.co.uk](https://www.dexters.co.uk)