



Cavell Street, E1

£450,000

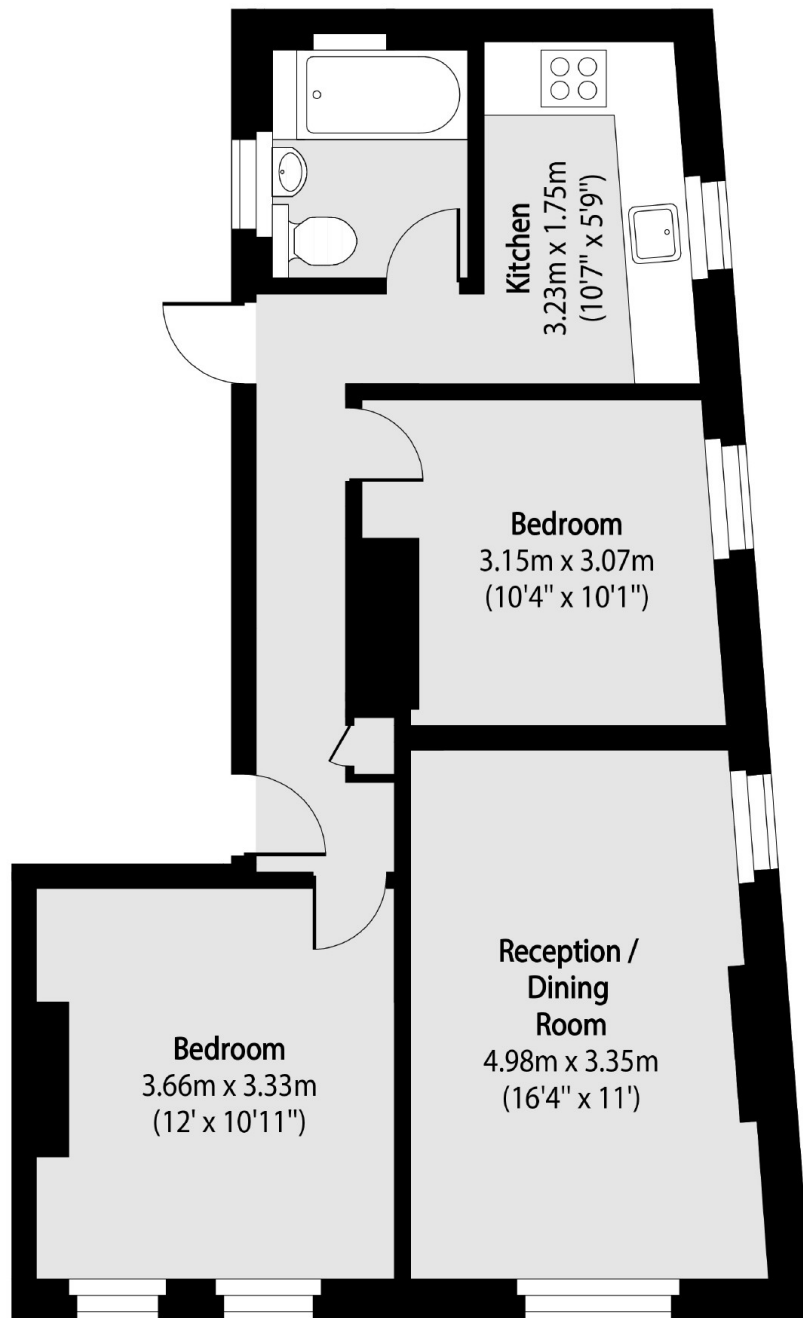
Two bedroom apartment with bright interiors in a popular location. The property has a large living room with modern interiors and space to dine, a separate kitchen with integrated appliances, two double bedrooms with plenty of space for storage and a family bathroom. The entire apartment benefits from a wealth of natural light via the large sash windows which adds to the properties charm.

Ideally located within a short distance of both Whitechapel (Windrush, Hammersmith&City, Elizabeth) and Shadwell (DLR), this property provides easy access to all corners of the City as well as the vast selection of restaurants and cultural spots that Whitechapel and the surrounding areas have to offer.

Features

Two Double Bedrooms
Sought after location
Wooden Flooring
Natural Light
Dual Aspect

Cavell Street,
London, E1



Total area (approx): 57.22 sq m (616 sq. ft)

Dexters

Shoreditch
44 Great Eastern Street
London
EC2A 3EP
Sales
0207 483 6371

Energy Rating: . We aim to make our particulars both accurate and reliable. However they are not guaranteed; nor do they form part of an offer or contract. If you require clarification on any points then please contact us, especially if you're traveling some distance to view. Please note that appliances and heating systems have not been tested and therefore no warranties can be given as to their good working order.

 **RICS** | Regulated
Estate Agent
and Letting Agent

[dexters.co.uk](https://www.dexters.co.uk)