



## Cavell Street, E1

### £400,000

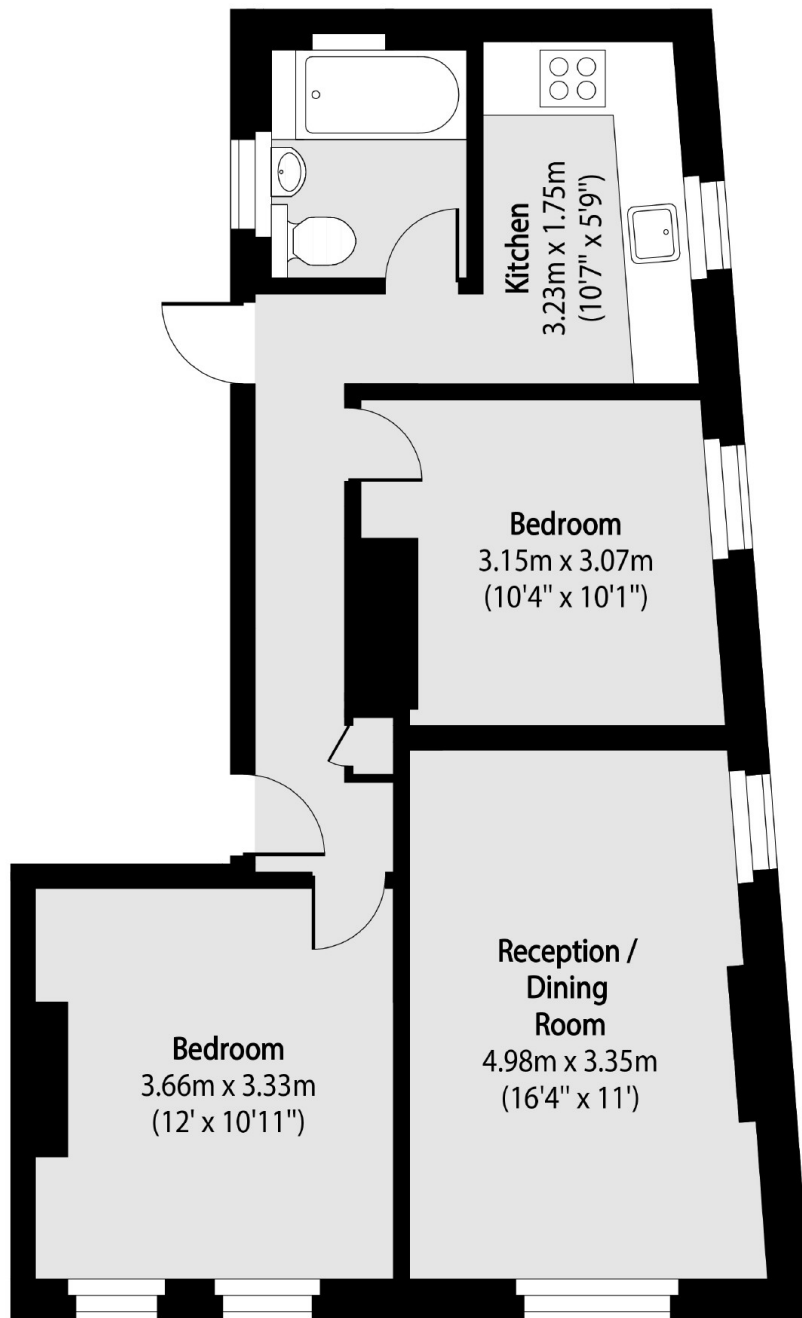
Two bedroom apartment with bright interiors in a popular location. The property has a large living room with modern interiors and space to dine, a separate kitchen with integrated appliances, two double bedrooms with plenty of space for storage and a family bathroom. The entire apartment benefits from a wealth of natural light via the large sash windows which adds to the properties charm.

Ideally located within a short distance of both Whitechapel (Windrush, Hammersmith&City, Elizabeth) and Shadwell (DLR), this property provides easy access to all corners of the City as well as the vast selection of restaurants and cultural spots that Whitechapel and the surrounding areas have to offer.

### Features

- Two Double Bedrooms
- Sought After Location
- Wooden Flooring
- Natural Light
- Dual Aspect

# Cavell Street, London, E1



Total area (approx): 57.22 sq m (616 sq. ft)