



Motley Avenue, EC2A
£1,450,000

Dexters



Motley Avenue, EC2A

Unique two bedroom, freehold house arranged over three floors in the heart of Shoreditch. Entering via the cobblestone path you are immediately met with generous space with the large, semi-open plan living room with ample space to dine. The kitchen has been recently renovated and has fully integrated appliances and through the kitchen area you have a downstairs utility room and WC.

Motley Avenue is located within the very heart but also within a peaceful pocket of Shoreditch. The area offers an ample choice of shops, bars and even a selection of Michelin Starred restaurants. Brick Lane, Columbia Road Flower Market and Spitalfields Market are also close by. Transport links are very convenient with Motley Avenue being located about equidistant from Shoreditch High Street, Liverpool Street and Old Street tube stations.

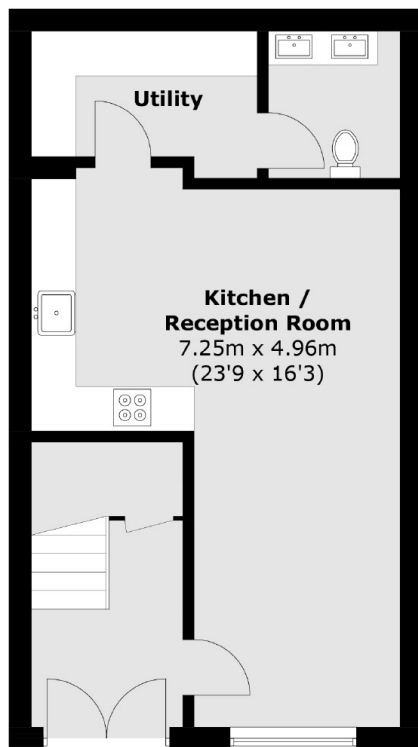
The first and second floor are mirrored floor plans and give access to sizeable double bedrooms, both of which have high quality en-suites. Both bedrooms have living quarters that can be separated via sliding pocket doors allowing this space to become multi purpose either as a walk in wardrobe, dressing area or home office. The property has been renovated to a very high standard throughout and has features, in keeping with the buildings history, such as original fireplaces on each floor and large sashed windows allowing plenty of light.

Features

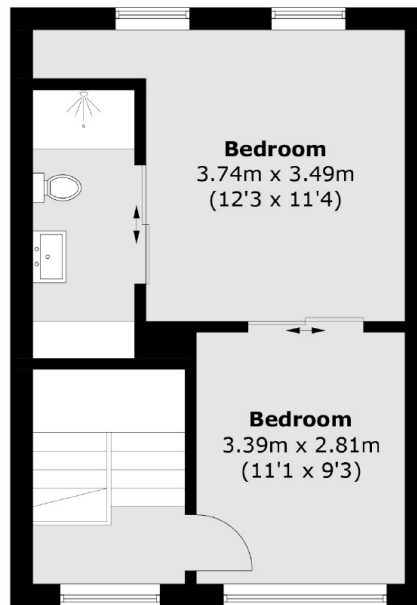
- Freehold House
- Arranged over three floors
- Recently renovated
- Original period features
- Two large bedrooms with en-suites



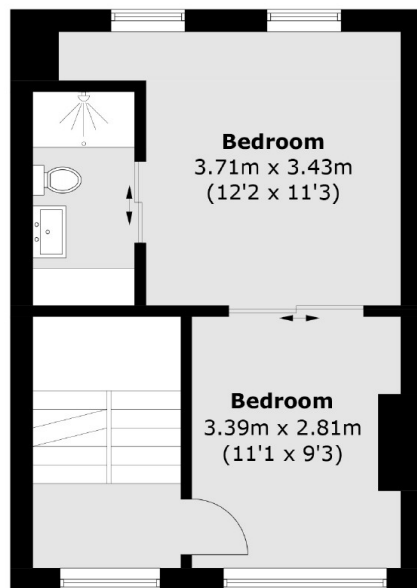
Motley Avenue, London, EC2A



Ground Floor



Second Floor



First Floor

Total area (approx.): 120.0 sq. m (1,291.6 sq. ft)