



Motley Avenue, EC2A
£1,450,000

Dexters



Motley Avenue, EC2A

A unique two bedroom, freehold house arranged over three floors in the heart of Shoreditch. The property opens onto a generous entryway and leads onto the large, semi-open plan living room with ample space to dine. The kitchen has been recently renovated and has fully integrated appliances and through the kitchen area you have a downstairs utility room and WC.

The first and second floor are mirrored floor plans and give access to sizeable double bedrooms, both of which have high quality en-suites. Both bedrooms have living quarters that can be separated via sliding pocket doors allowing this space to become multi purpose either as a walk in wardrobe, dressing area or home office. The property has been renovated to a very high standard throughout and has features, in keeping with the buildings history, such as original fireplaces on each floor and large sashed windows allowing plenty of light.

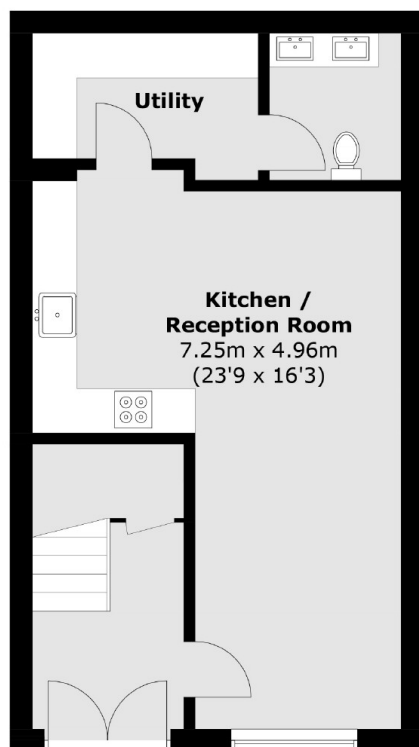
Motley Avenue is located within the very heart but also within a peaceful pocket of Shoreditch. The area offers an ample choice of shops, bars and even a selection of Michelin Starred restaurants. Brick Lane, Columbia Road Flower Market and Spitalfields Market are also close by. Transport links are very convenient as Shoreditch High Street, Liverpool Street and Old Street tube stations are equidistant.

Features

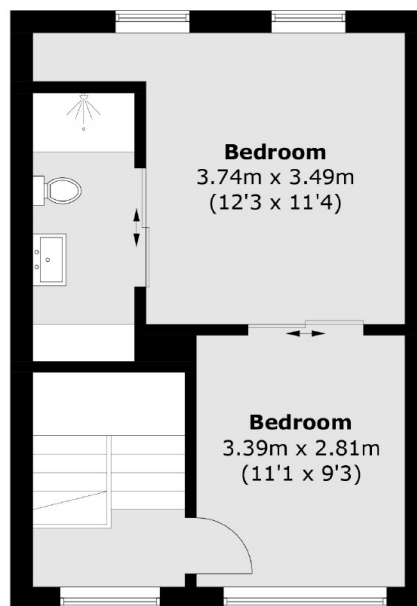
- Freehold House
- Arranged Over Three Floors
- Recently Renovated
- Original Period Features
- Two Large Bedrooms
- Multiple En Suites



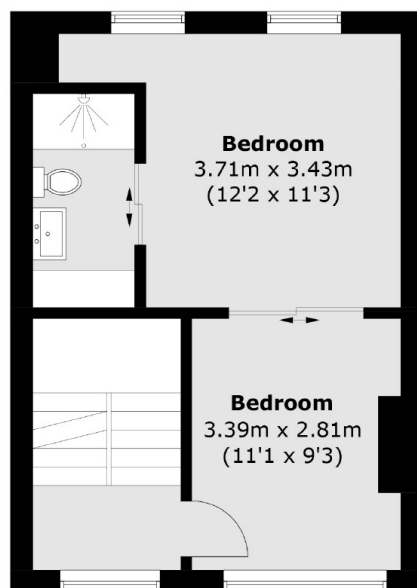
Motley Avenue, London, EC2A



Ground Floor



Second Floor



First Floor

Total area (approx.): 120.0 sq. m (1,291.6 sq. ft)