



## Conant Mews, E1

£420,000

A one bedroom apartment, modernised throughout and set within a popular Central location. The property has a large open plan living room with space to dine, the kitchen has been renovated and has fully integrated appliances. This area leads out to the properties private balcony which looks out onto the development's tree lined communal gardens. The property has a sizeable double bedroom with ample built in storage both in the bedroom and in the hallway. The family bathroom also has modern fittings. The development gives access to an on-site concierge and the apartment has a secure, allocated, parking space.

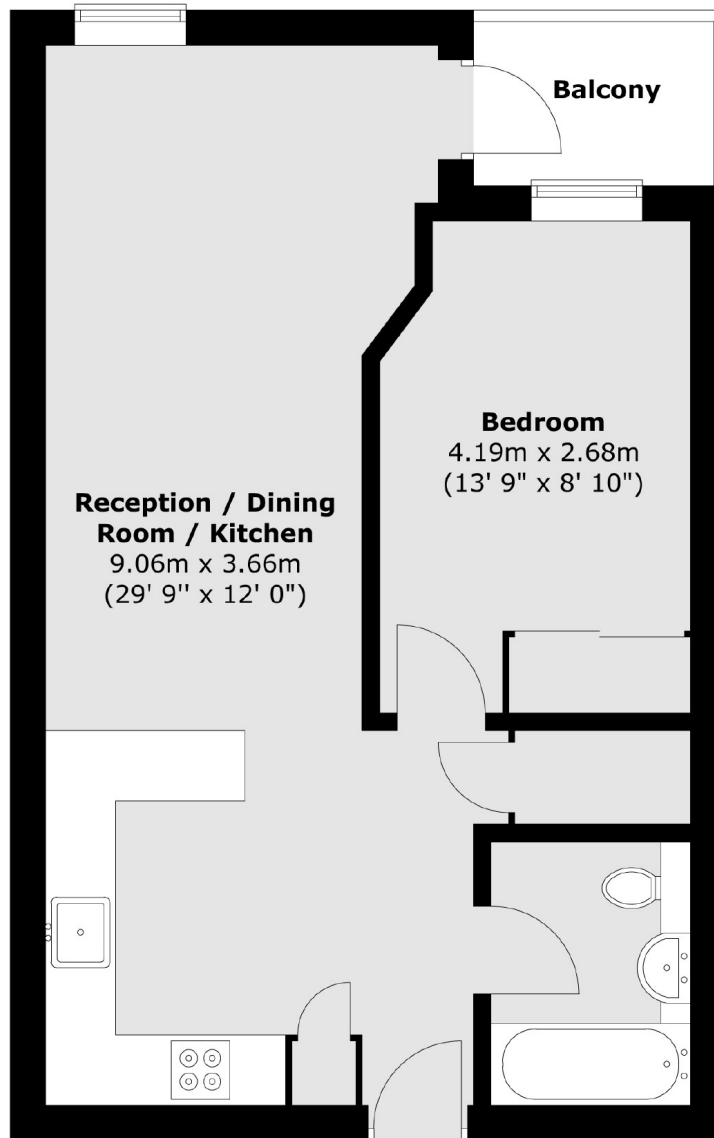
Hooper Square is perfectly located for access to Tower Hill and Liverpool Street Station (Elizabeth Line), and is just a short distance from Spitalfields market. This location gives access to a wide range of boutique shops, restaurants, cafés and shopping venues making it a very convenient location for residents.

### Features

- One Bedroom
- Modern Interiors
- Private Balcony
- 24hr Concierge
- Communal Gardens
- Allocated Parking Space

# Conant Mews, London, E1

## Second Floor



Total area (approx.) : 46.9 sq. m (505 sq. ft)  
Total balcony area (approx.) : 2.9 sq. m (31 sq. ft)

# Dexters

Shoreditch  
44 Great Eastern Street  
London  
EC2A 3EP  
Sales  
0207 483 6371

Energy Rating: B. We aim to make our particulars both accurate and reliable. However they are not guaranteed; nor do they form part of an offer or contract. If you require clarification on any points then please contact us, especially if you're traveling some distance to view. Please note that appliances and heating systems have not been tested and therefore no warranties can be given as to their good working order.

 **RICS** | Regulated  
Estate Agent  
and Letting Agent

dexters.co.uk