



**Principal Place, EC2A**

**£1,800,000**

**Dexters**



## Principal Place, EC2A

A two bedroom, two bathroom property located on the 39th floor. This modern apartment offers an open plan reception/kitchen, with built in appliances and a breakfast bar island, which provides dual aspect, far reaching City views and access to the private covered balcony, as well as space to dine. Both double bedrooms provide ample storage space, the primary bedroom features an en suite and the secondary bedroom has access to a private walk in wardrobe. The building benefits from 24 hour concierge service, residents gym and pool and a cinema room.

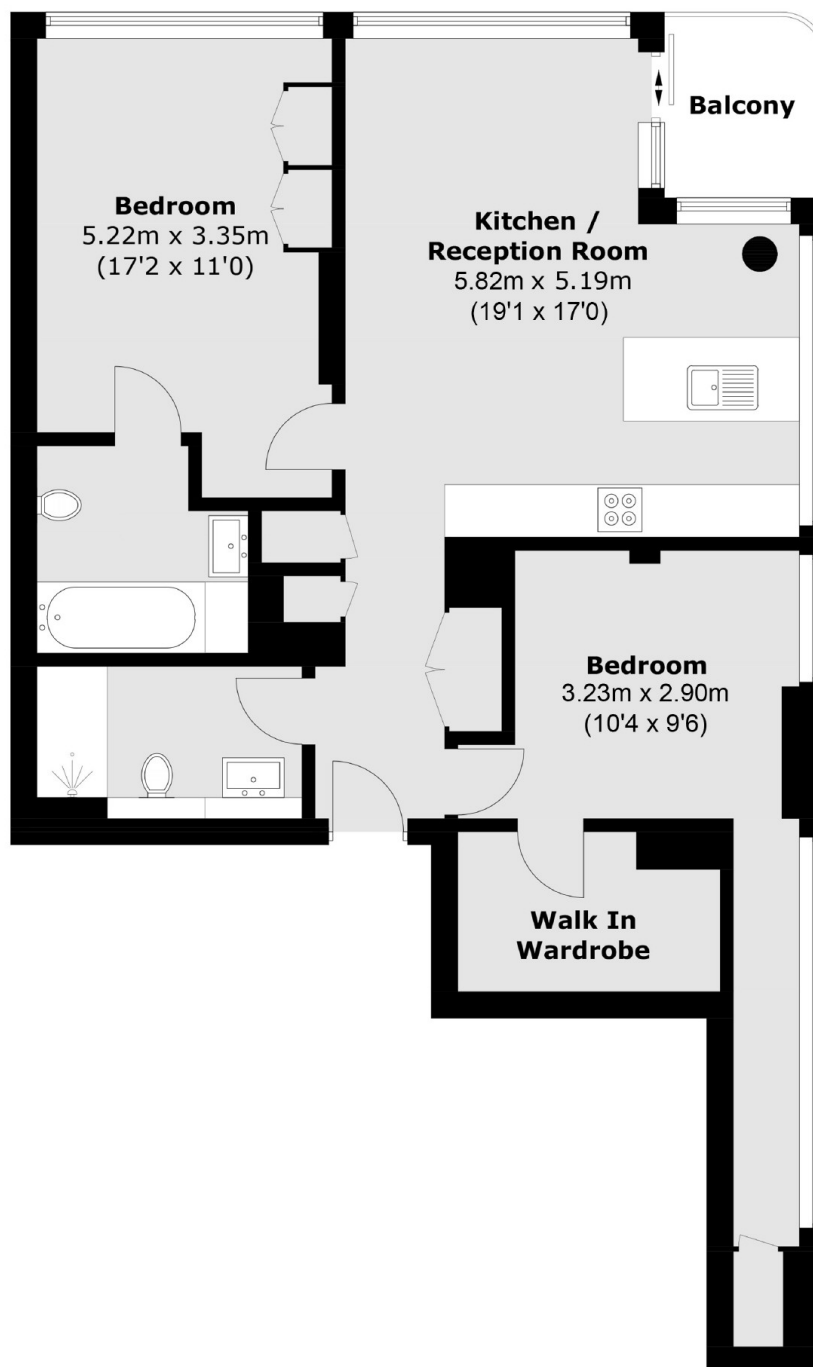
Principal Tower is situated close to Liverpool Street Station, with access to multiple tube lines and National Rail, and Shoreditch High Street Station (Overground). In addition to this, it is a short walk from Spitalfields Market and all the boutiques, shops, and bars it has to offer.

### Features

- Two Double Bedrooms
- 39th Floor
- Walk In Wardrobe
- Triple Aspect
- Gym & Swimming Pool
- Concierge



# Principal Place, London, EC2A



Total area (approx.): 83.9 sq. m (903.1 sq. ft)  
Balcony : 3.6 sq. m (38.7 sq. ft)