



Westland Place, N1
£850,000

Dexters



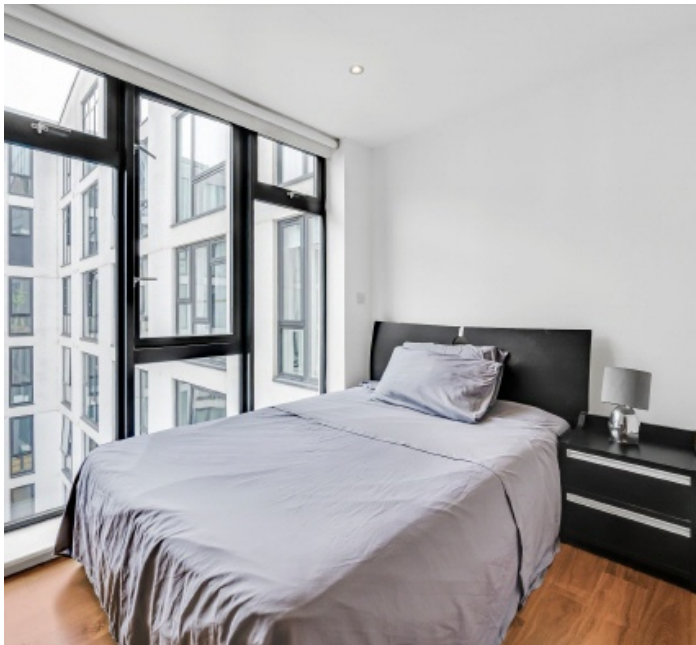
Westland Place, N1

A modern apartment located on the fourth floor of this secure development, with lift access. The property is comprised of a bright, open plan reception/kitchen with modern appliances and access to the private balcony, three double bedrooms, one of which is en suite, and a contemporary family bathroom.

This apartment is located a short distance from Old Street Station (Northern Line), Shoreditch High Street (Overground) and Liverpool Street (Elizabeth Line), as well as numerous bus links. The area provides a selection of bars, restaurants, and shops.

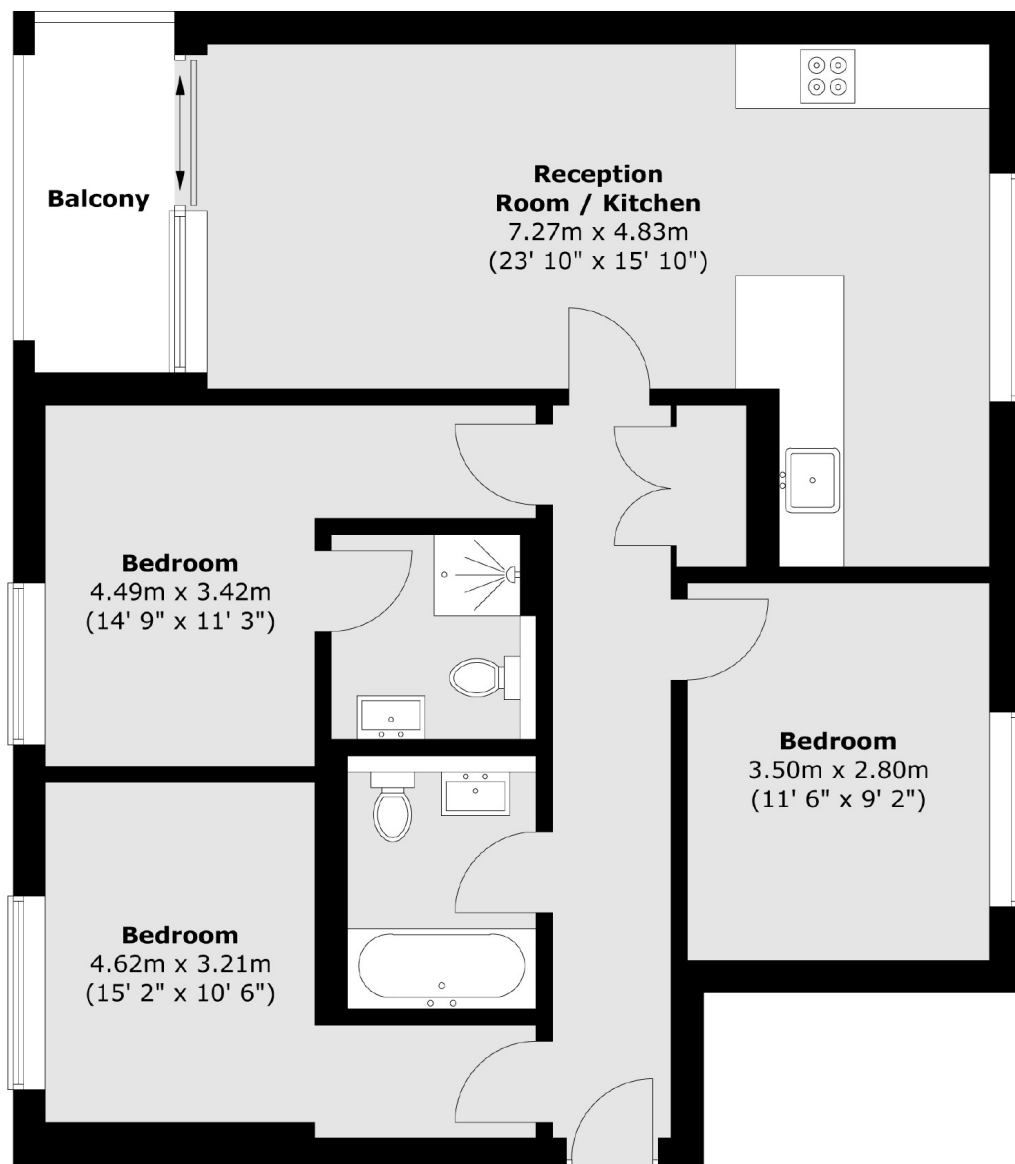
Features

- Three Double Bedrooms
- Lift Access
- Two Bathrooms
- Fourth Floor
- Private Balcony
- Parking



Westland Place, London, N1

Fourth Floor



Total area (approx.) : 79.4 sq. m (855 sq. ft)
Total balcony area (approx.) : 4.5 sq. m (48 sq. ft)