



Poole Street, N1
£850,000

Dexters



Poole Street, N1

A large two bedroom apartment in the award-winning Gainsborough Studios. This property offers a spacious, open plan reception/kitchen with hardwood flooring, large windows and built in appliances. Both double bedrooms feature built in storage space and floor to ceiling windows which allow for plenty of natural light. The primary bedroom, which is large enough for a home office space, also features a walk in wardrobe space and an en suite.

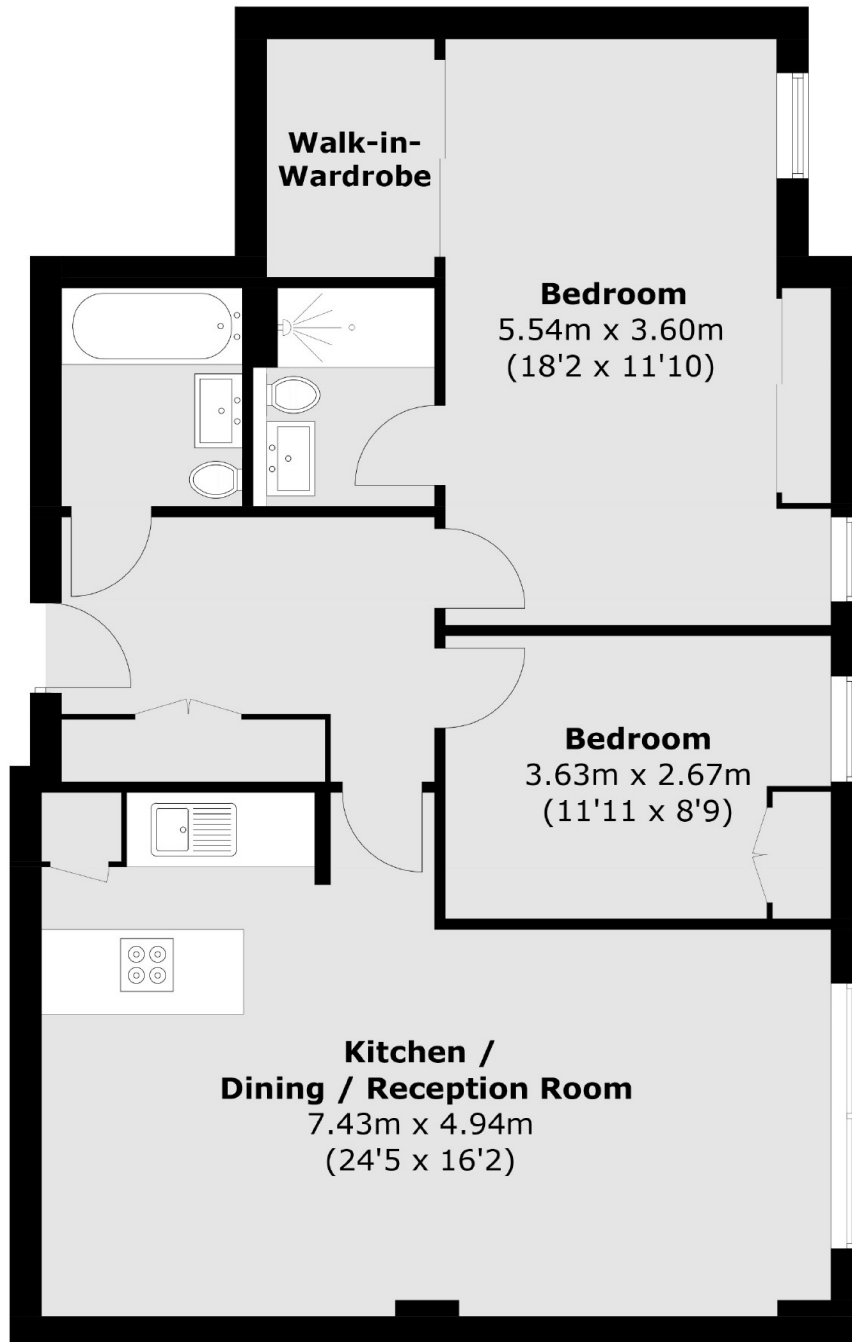
Located just over half a mile from Old Street Underground (Northern line and National Rail) and Hoxton Station (Overground), the Elizabeth Line is within a ten minute bus ride. The property is walking distance to the many wine bars, gastro-pubs, and cafés on Upper Street and Shoreditch.

Features

- Two Double Bedrooms
- En Suite
- Chain Free
- Popular Development
- Modern Design
- Great Location



Poole Street, London, N1



Total area (approx.): 82.6 sq. m (889.1 sq. ft)

Dexters

Shoreditch
44 Great Eastern Street
London
EC2A 3EP
Sales
0207 483 6371

Energy Rating: . We aim to make our particulars both accurate and reliable. However they are not guaranteed; nor do they form part of an offer or contract. If you require clarification on any points then please contact us, especially if you're traveling some distance to view. Please note that appliances and heating systems have not been tested and therefore no warranties can be given as to their good working order.

 **RICS** | Regulated
Estate Agent
and Letting Agent

dexters.co.uk