



Cremer Street, E2

£600 Per week

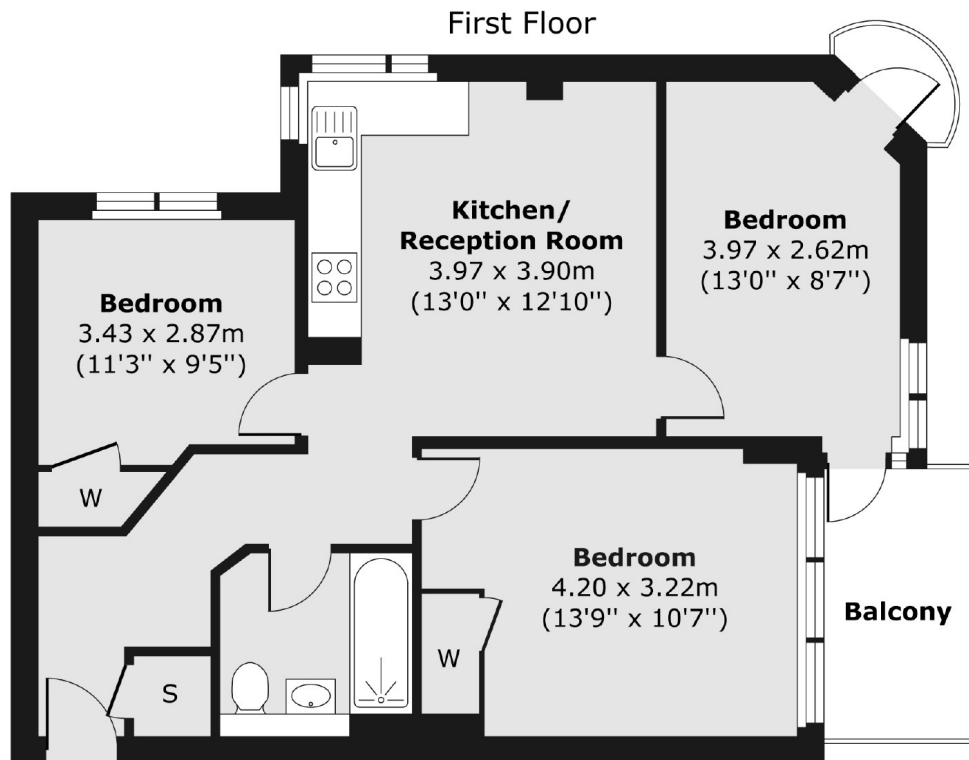
A three bedroom property in a secure block. This apartment has three double bedrooms, an open plan living area, wooden floor throughout and comes with two separate balconies.

The property is located a short distance to Hoxton overground as well as being close to all the local bars, cafes and restaurants of Shoreditch and Old Street.

Features

- Three Bedrooms
- Open Plan
- Two Balconies
- Secure Block
- Great Transport Links
- Great Location

Cremer Street, London, E2



Total area (approx.) 61.84 sq. m (666 sq. ft)
Balcony area (approx.) 6.07 sq. m (65 sq. ft)