



## Hanbury Street, E1

### £620,000

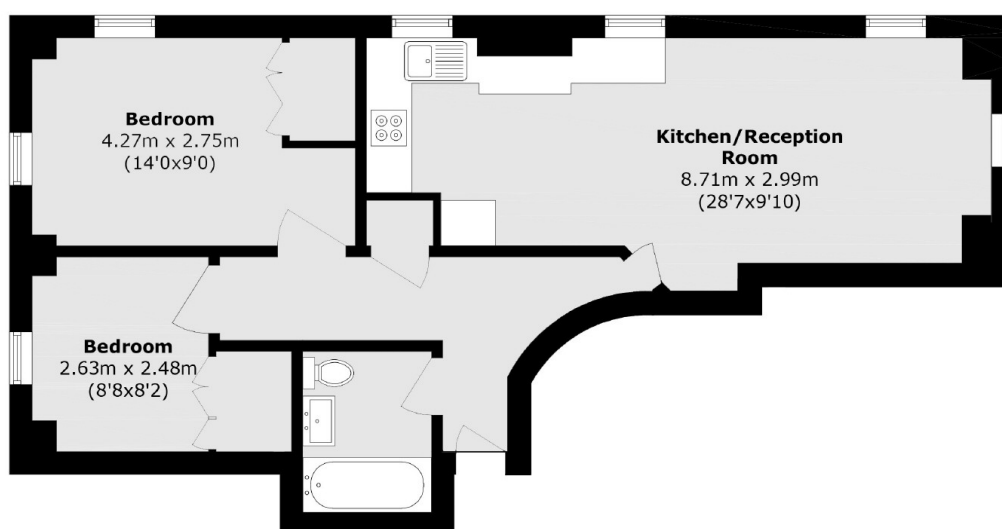
A south facing, two double bedroom apartment located in Hanbury Hall, a French Huguenot Church which was converted into an event space, cafe and apartments in 2016. This property features an open plan living and kitchen space, two good sized double bedrooms with built in storage, wooden flooring, sash windows throughout and lift access.

Located in the heart of Spitalfields, this property is within a close proximity to a selection of shops, cafés, bars and restaurants. The nearest station is Liverpool street for the Elizabeth line, Central line and National Rail Services for easy access to all corners of the City.

### Features

- Two Double Bedrooms
- Church Conversion
- Sash Windows
- Wooden Flooring
- Lift Access
- Secure Building

# Hanbury Street, London, E1



Total area (approx.): 57.9 sq. m (623.2 sq. ft)