



## Teesdale Close, E2

£250,000

A studio apartment within an eye-catching pub conversion and set in a sought after location. This studio apartment has a fully integrated kitchen, space to dine, a sizeable bathroom and bright interiors made possible by the large sashed windows found in the property.

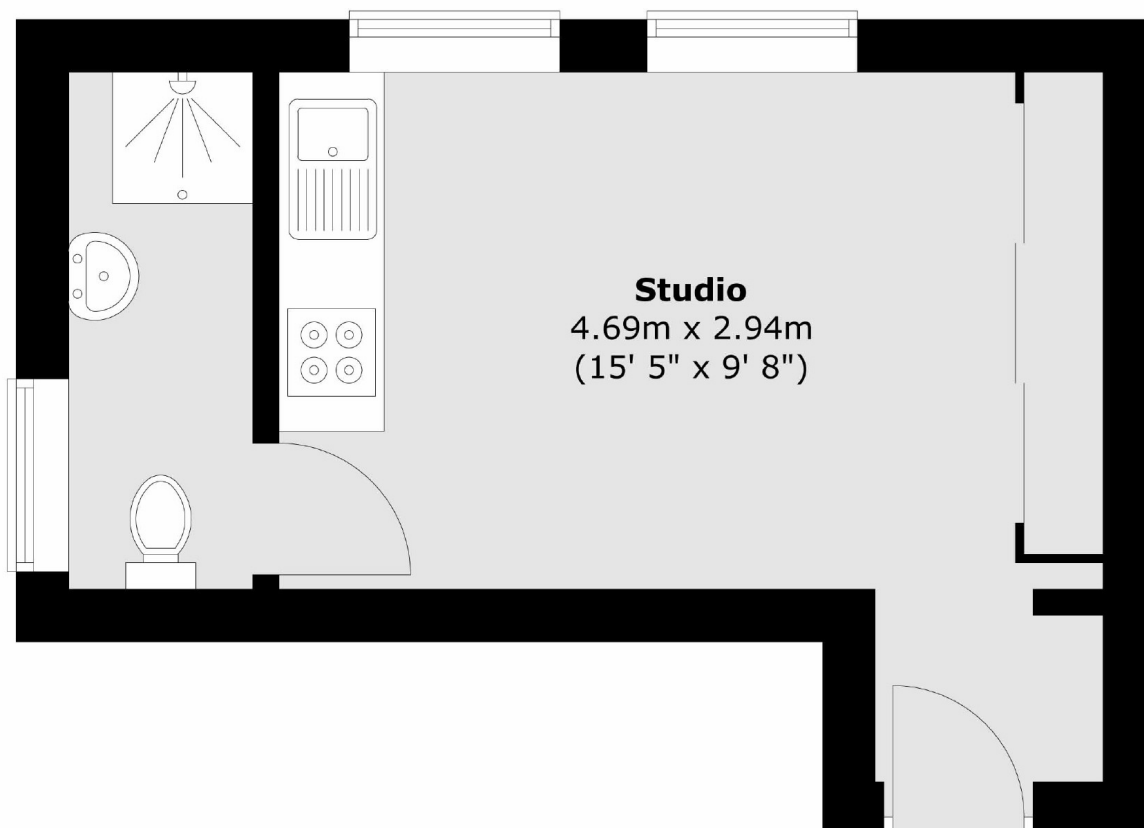
A short walk from both Shoreditch and the City, the flat enjoys convenient transport connections and a thriving local atmosphere. Green spaces like Haggerston Park, London Fields, and Victoria Park are all nearby, with the buzz of Broadway Market and Columbia Road's iconic flower market just moments away. Offered with no onward chain.

### Features

Studio Apartment  
Pub Conversion  
Bright Interiors  
Space to Dine  
Popular Location  
Dual Aspect

# Teesdale Close, London, E2

## Third Floor



Total area (approx.) : 19 sq. m (204 sq. ft)