



**City Road, EC1Y**  
**£1,000,000**

**Dexters**



## City Road, EC1Y

Set on the third floor, this spacious two bedroom, two bathroom apartment is located to the rear of the development, benefitting from south-facing city views. The apartment features an open plan living and dining area, with a fully fitted kitchen and a juliet balcony. Residents benefit from a gym, with sauna and steam room, and a rooftop terrace with panoramic views.

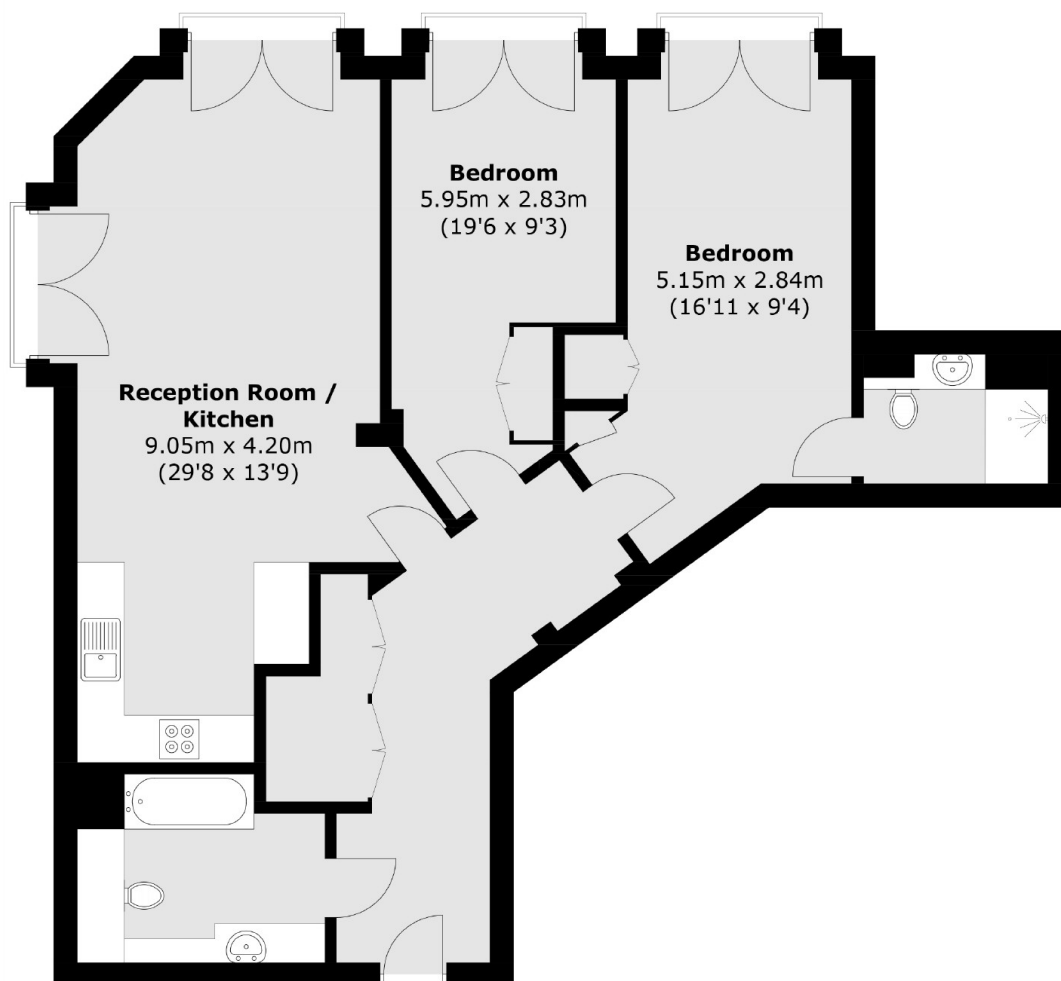
Bezier Apartment is located within close proximity to Old Street station (Northern Line), Moregate (Hammersmith, City and Metropolitan line along with National Rail) and Barbican (Elizabeth Line). This location provides easy access to all corners of the City as well as the many popular bars, restaurants, cafés and supermarkets the local area has to offer.

### Features

- Two Double Bedrooms
- South Facing
- Communal Roof Terrace
- 24-hr Concierge
- Residents Gym
- Sauna & Steam Room



# City Road, London, EC1Y



Total area (approx.): 94.9 sq. m (1,021.5 sq. ft)