



Hooper Street, E1

£650,000

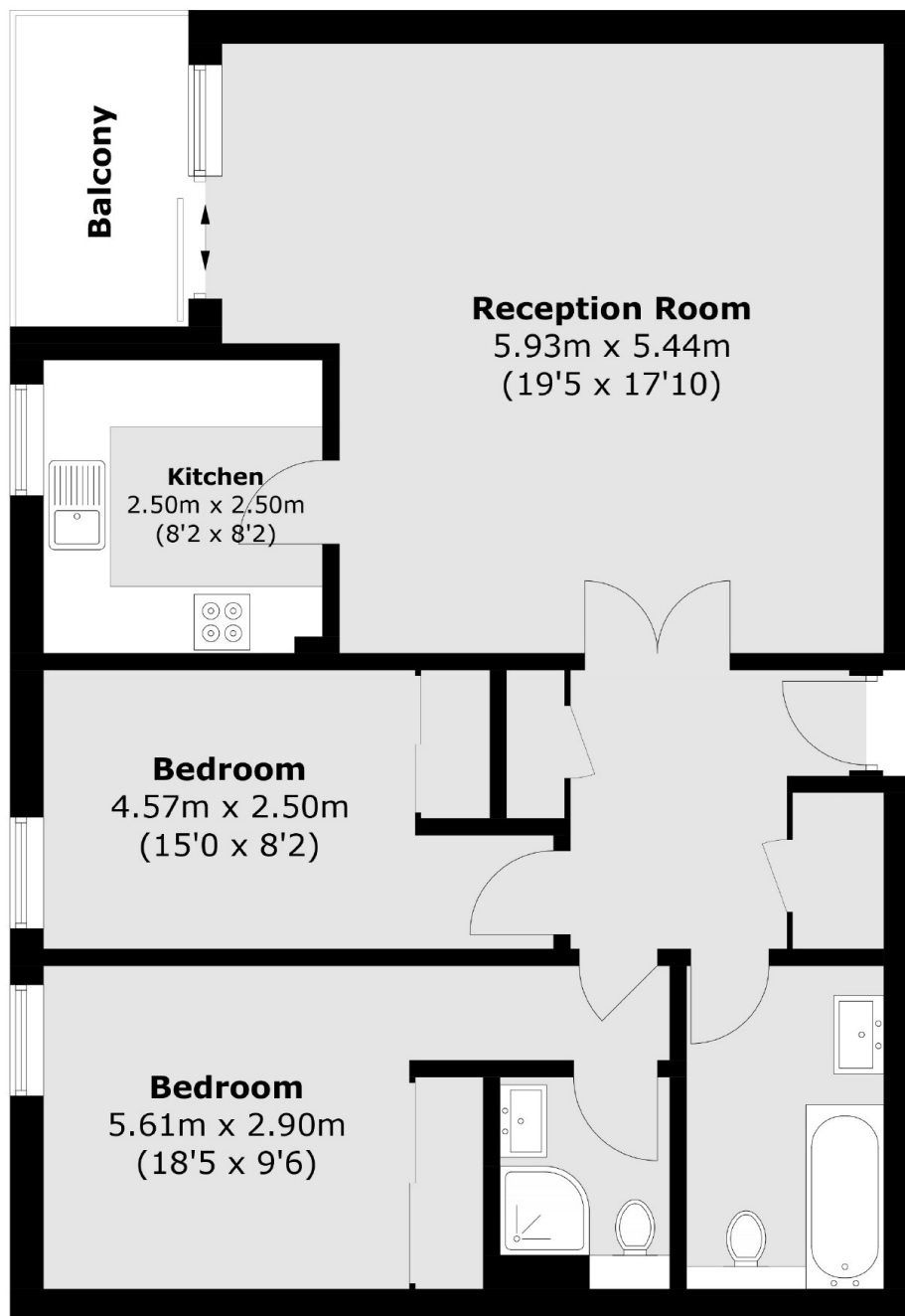
A large two bedroom, two bathroom apartment set within this sought after location. The property provides a bright living room with ample space to dine which leads onto the properties private balcony overlooking the developments landscaped gardens. The apartment has two good size double bedrooms, both of which have in-built storage and also an en suite in the principle bedroom. The development has an on-site, 24hr concierge service and the apartment comes with a secure, off-street parking space.

Hooper Square is ideally located for access to Tower Hill and Liverpool Street Station (Elizabeth line), and is just a short distance from the many amenities of Spitalfields market, The City and Shoreditch.

Features

- Two Bedrooms
- Two Bathrooms
- Large Living Room
- Private Balcony
- Separate Kitchen
- 24hr Concierge

Hooper Street, London, E1



Total area (approx.): 79.5 sq. m (855.7 sq. ft)
Balcony : 4.3 sq. m (46.3 sq. ft)

Dexters

Shoreditch
44 Great Eastern Street
London
EC2A 3EP
Sales
0207 483 6371

Energy Rating: D. We aim to make our particulars both accurate and reliable. However they are not guaranteed; nor do they form part of an offer or contract. If you require clarification on any points then please contact us, especially if you're traveling some distance to view. Please note that appliances and heating systems have not been tested and therefore no warranties can be given as to their good working order.

 **RICS** | Regulated
Estate Agent
and Letting Agent

[dexters.co.uk](https://www.dexters.co.uk)