



Barnet Grove, E2

£3,700 Per calendar month

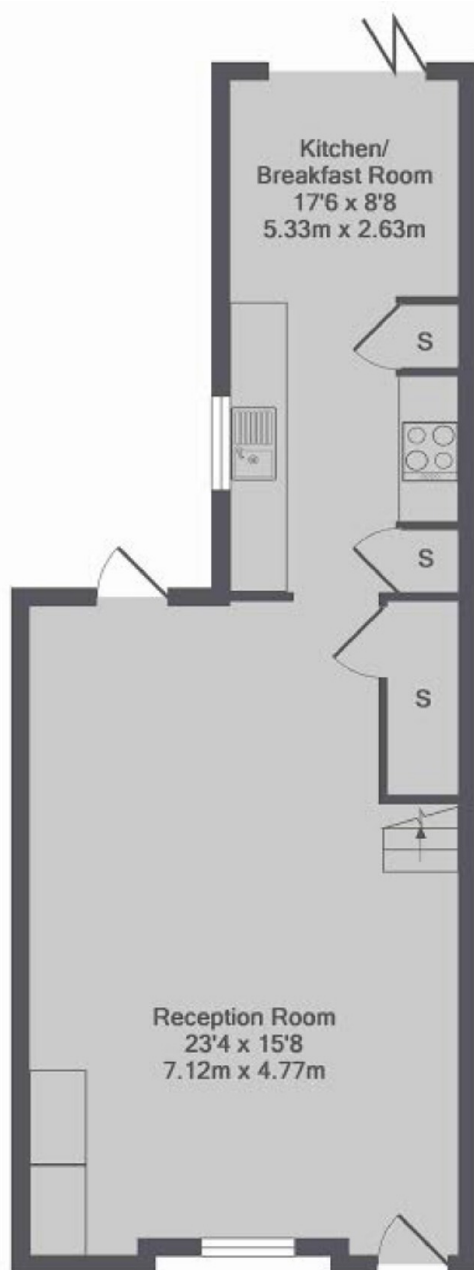
A 1,000sq ft Victorian townhouse overlooking Jesus Green. Recently refurbished this spacious property features three double bedrooms, beautiful original aspects and a private East facing terrace. The property is available unfurnished.

Jesus Green is one of the most renowned areas of Shoreditch and Hackney, with rows of beautiful Victorian properties running alongside Columbia Road flower market and the green.

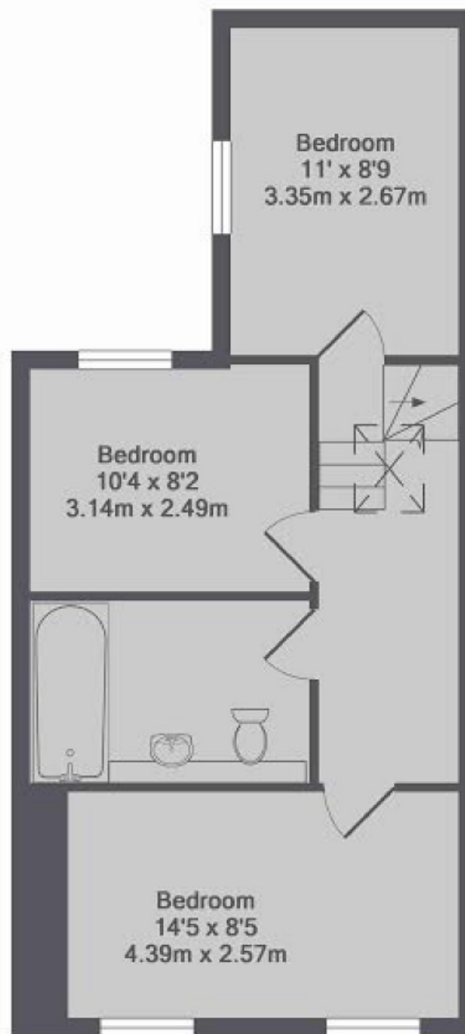
Features

1,000sq ft
Victorian Townhouse
Recently Refurbished
Private Terrace
Overlooking Jesus Green
Transport Links

Barnet Grove, London, E2



Ground Floor



1st Floor

Barnet Grove, E2
Total Approx. Floor Area 989 Sq.Ft. (91.9 Sq.M.)

Dexters

Shoreditch
44 Great Eastern Street
London
EC2A 3EP
Lettings
0207 483 6372

Energy Rating: E. We aim to make our particulars both accurate and reliable. However they are not guaranteed; nor do they form part of an offer or contract. If you require clarification on any points then please contact us, especially if you're traveling some distance to view. Please note that appliances and heating systems have not been tested and therefore no warranties can be given as to their good working order.

 **RICS** | Regulated
Estate Agent
and Letting Agent

[dexters.co.uk](https://www.dexters.co.uk)