



Clovelly Way, E1

£350,000

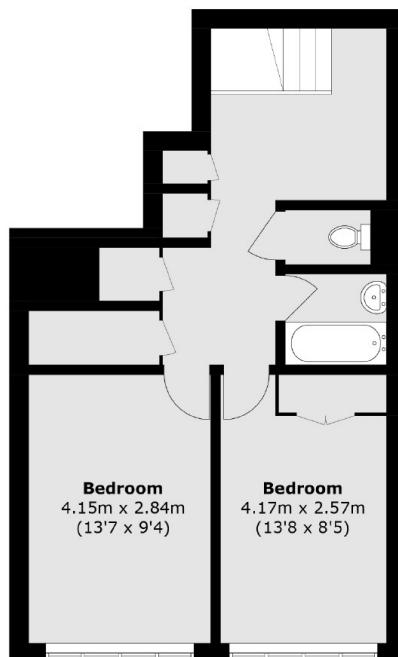
A two bedroom, split-level apartment with a private garden. The kitchen and large living room are located on the ground floor with access to the garden and both double bedrooms, W/C, and bathroom are located on the first floor. The property features ample storage throughout.

Clovelly Way is located just minutes from Stepney Green Park. Both Limehouse DLR, Stepney Green and Whitechapel Underground Stations are nearby offering excellent transport links into Canary Wharf and the City.

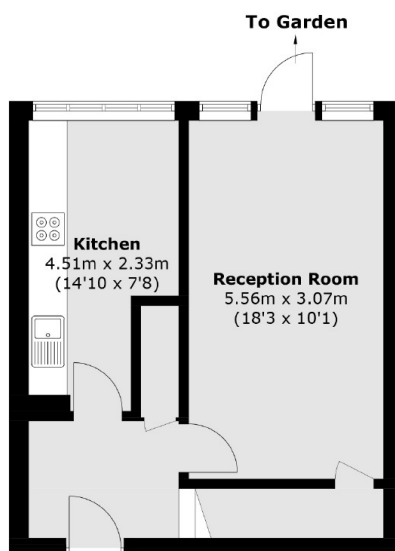
Features

- Split Level
- Two bedroom
- Private Garden
- Built in Storage
- Separate Kitchen
- Secure Entry

Clovelly Way, London, E1



First Floor



Ground Floor

Total area (approx.): 80.3 sq. m (864.3 sq. ft)

Dexters

Shoreditch
44 Great Eastern Street
London
EC2A 3EP
Sales
0207 483 6371

Energy Rating: . We aim to make our particulars both accurate and reliable. However they are not guaranteed; nor do they form part of an offer or contract. If you require clarification on any points then please contact us, especially if you're traveling some distance to view. Please note that appliances and heating systems have not been tested and therefore no warranties can be given as to their good working order.

 **RICS** | Regulated
Estate Agent
and Letting Agent

[dexters.co.uk](https://www.dexters.co.uk)