



Cadmium Square, E2
£800,000

Dexters



Cadmium Square, E2

A three bedrooms, three bathroom apartment set on the 9th floor of Grand Regent Tower with panoramic views. The property has a large, open plan living area with ample space to dine and a fully integrated kitchen. This area leads out to the properties large private balcony with panoramic views reaching to Victoria Park, both ways down regents canal, over Mile End Park, the Stratford skyline and Canary Wharf. The property has three double bedrooms, all with built in storage, two of which are en-suite. The apartment has a further family bathroom, plenty of additional storage in the hall and an allocated, underground parking space.

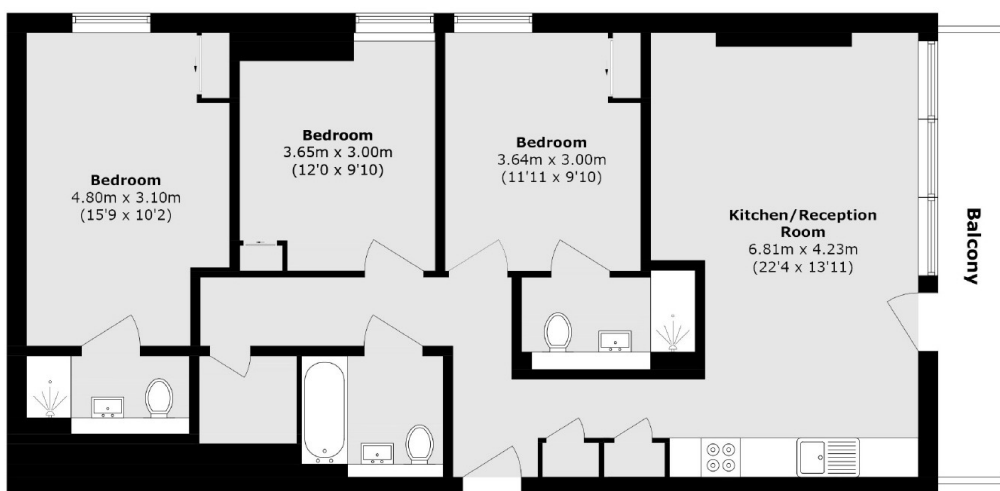
Grand Regent Tower is ideally located on the sought after Palmers Road, just a short distance from Mile End (District, Hammersmith&City) and Bethnal Green (Central). Victoria Park is close by along with the local coffee shops and restaurants.

Features

- Three Bedrooms
- Three Bathrooms
- Private Balcony
- Panoramic Views
- Modern Development
- Underground Parking



Cadmium Square, London, E2



Total area (approx.): 93.0 sq. m (1001.0 sq. ft)

Balcony area (approx.): 6.8 sq. m (73.1 sq. ft)