



## Arbour Square, E1

### £1,150,000

End of terrace Grade II listed Georgian Townhouse set on the sought after Arbour Square, this freehold home is arranged over three floors. The ground floor entrance level has a fully integrated kitchen with separate dining area that leads out to the spacious living room with bi-fold doors which open onto the west facing garden. This floor also has a downstairs WC.

The first floor currently offers the second living area (which is often used as the primary double bedroom) overlooking Arbour Square Gardens and the three piece family bathroom, the second floor consists of the final two double bedrooms, one of which overlooks the garden. The large sashed windows and bi-fold doors on the

### Features

End of terrace  
Grade II listed Georgian  
Townhouse  
Three bedrooms  
Bi-fold doors  
Original features



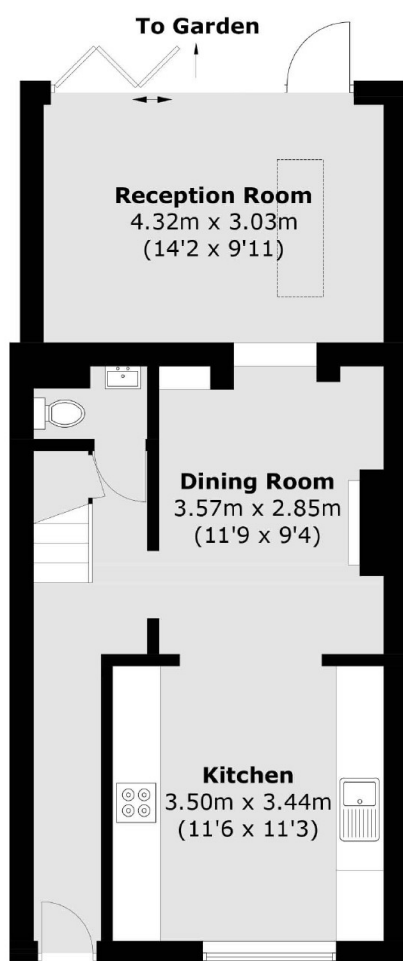


**Arbour Square, E1**

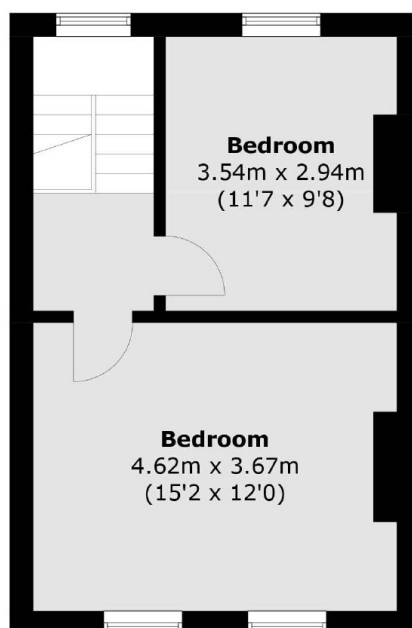




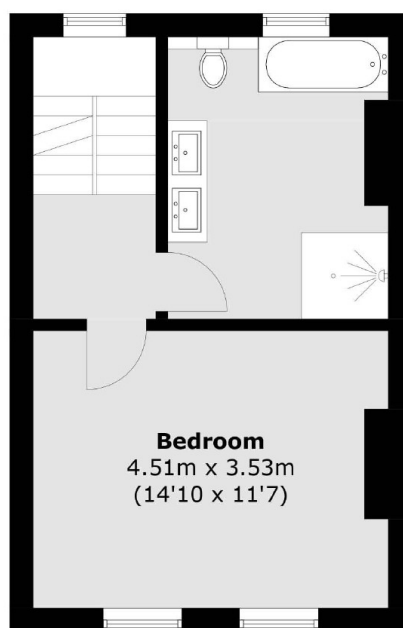
# Arbour Square, London, E1



**Ground Floor**



**Second Floor**



**First Floor**

Total area (approx.): 114.2 sq. m (1,229.2 sq. ft)