



Millennium Place, E2

£550,000

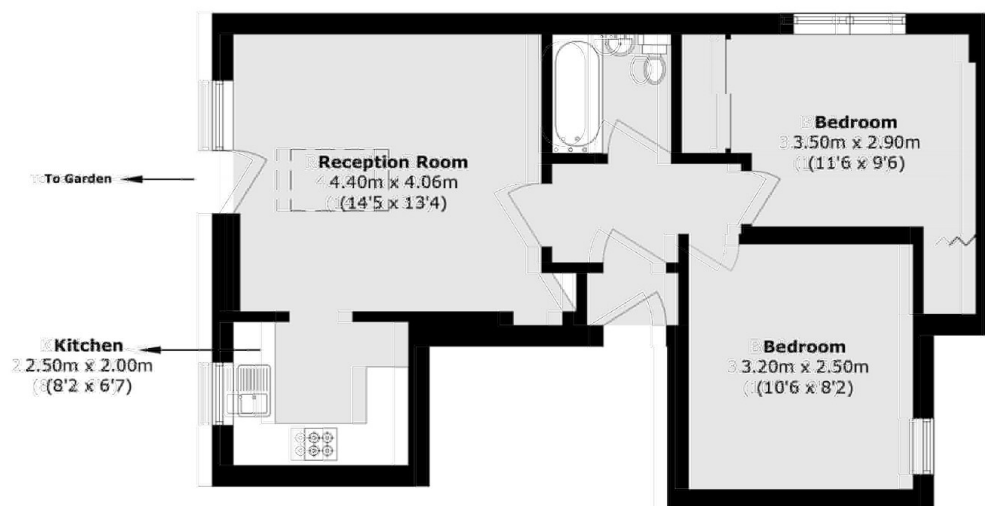
A two bedroom apartment within a popular gated development in a sought after Cambridge Heath location. The apartment has a large living room with ample space to dine and a semi-separate kitchen with fully integrated appliances - this area leads out to the properties private terrace/garden area. The property has two double bedrooms with in-built storage, a modern family bathroom and plenty of further storage in the entrance hallway. The apartment also comes with an allocated parking space.

Millennium place is within a very popular Cambridge Heath/Bethnal Green location, a wide variety of amenities including bars, restaurants and further shopping venues can be found close by, the famous green spaces of Victoria Park and Cambridge Heath are found incredibly close by whilst transport links include Cambridge Heath (Overground) and Bethnal Green (Central Line) and many bus routes for access to all corners of the City and beyond.

Features

- Two bedroom apartment
- Gated development
- Private garden/terrace
- Allocated parking space
- Sought after location

Millennium Place, London, E2



Total area (approx.): 56.4 sq. m (607.1 sq. ft)