



Victoria Park Square, E2

£575,000

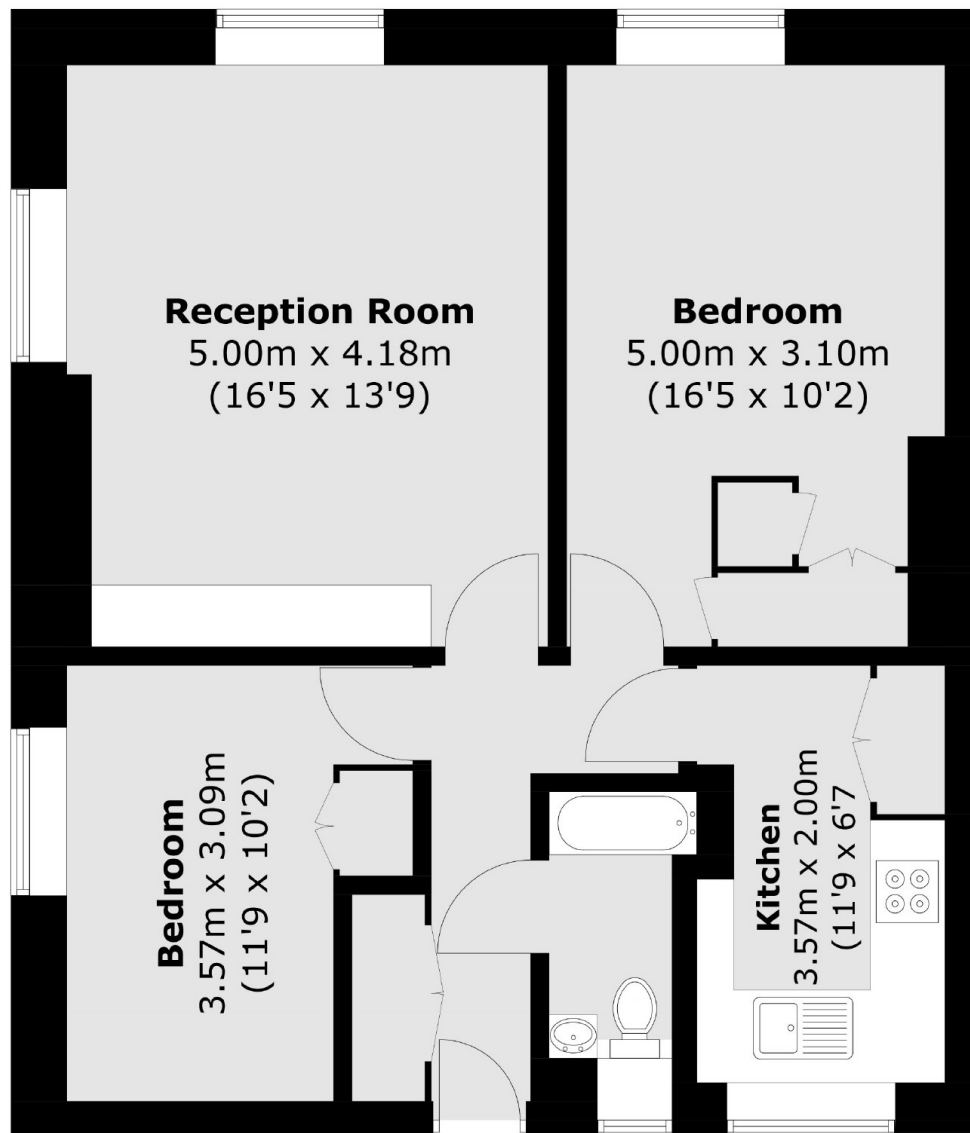
Two bedroom apartment set on the ground floor of this popular and historic mansion block style development built by the East End Dwellings Company in 1934. The apartment offers a large, open plan living room with ample space to dine and a modern separate kitchen with integrated appliances. The property also provides two bedrooms, both of which provide in-built storage. In addition, the property features hard wood flooring throughout and a generous amount of natural light made possible by the large, characterful sashed windows.

Mulberry House is located on the impressive tree-lined Victoria Park Square overlooking the Museum Gardens. Mulberry House offers fantastic Transport Links with Bethnal Green (Central Line) Tube Station within a very short walk. In addition to the convenience of transport there is also a wealth of Local Amenities within easy reach with the Famous York Hall Public Baths at the end of the road and the open spaces of Victoria Park within close proximity.

Features

- Two Bedrooms
- Period Mansion Block
- Wood flooring throughout
- Modern integrated kitchen
- Sashed Windows
- Sought after location

Victoria Park Square, London, E2



Total area (approx.): 59 sq. m (635.1 sq. ft)