



New North Road, N1

£500,000

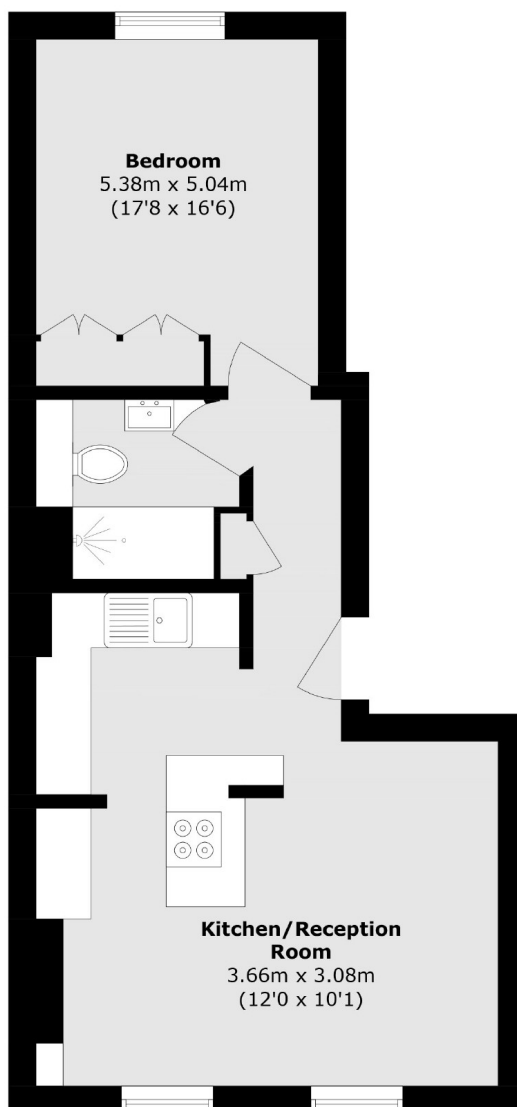
A well-presented, share of freehold, one-bedroom apartment set within this period conversion near Hoxton Park. This property provides a contemporary kitchen and semi-open plan living room with Sash windows, a good-sized double bedroom and a modern family bathroom with a walk-in shower and wooden flooring throughout.

Located equidistant from both Hoxton (Windrush line) and Old Street (Northern line), this share of freehold flat is conveniently positioned for access to all corners of the City. The surrounding area offers a vast selection of bars, restaurants and cafés as well as the green space of Shoreditch Park.

Features

- Share of Freehold
- One Double Bedroom
- Period Property
- Sash Windows
- Modern Bathroom
- Great Location

New North Road, London, N1



Total area (approx.): 43.4 sq. m (467.1 sq. ft)