



## Whiston Road, E2

### £650,000

A two bedroom, two bathroom apartment located within this purpose built block. This property offers an open plan reception/kitchen with space to dine and access to the private balcony via floor to ceiling glass doors which allow plenty of natural light. Both bedrooms are of a good size and the primary bedroom also provides access to the en suite bathroom and built in storage.

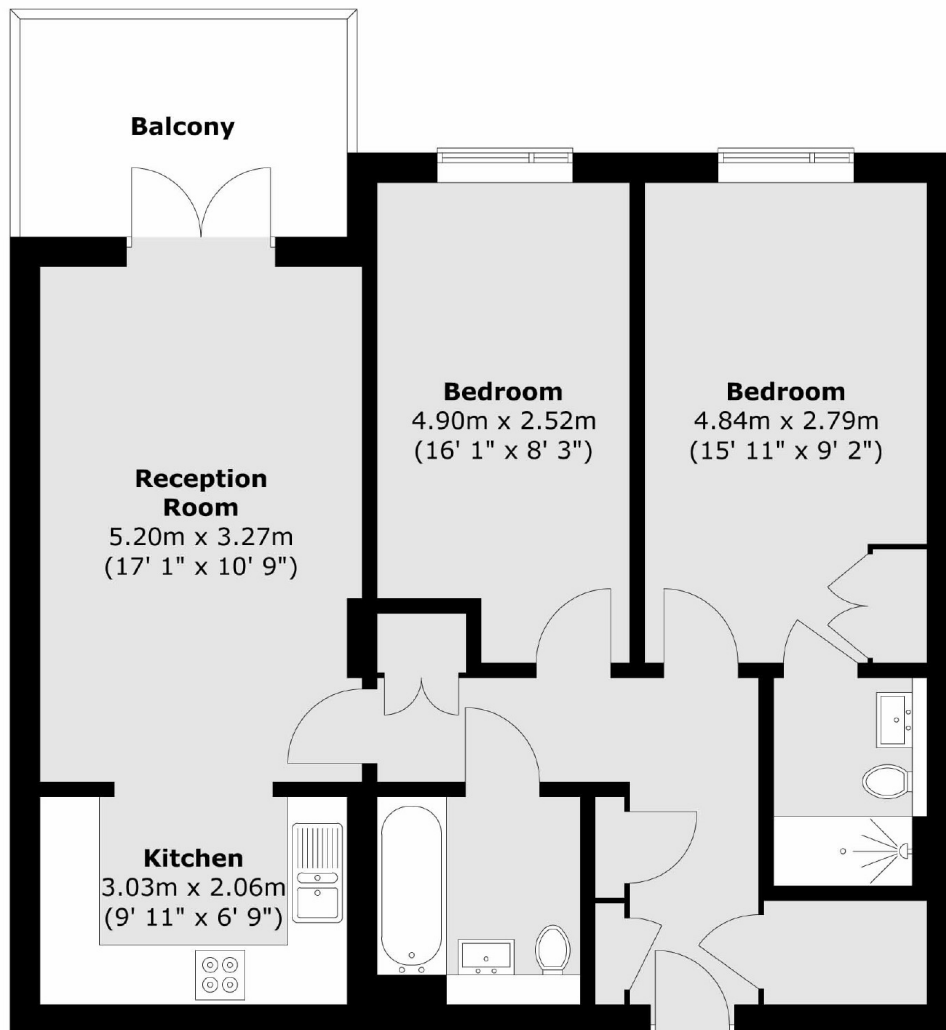
This property is located just a short distance from Hoxton station, providing easy access throughout the City via the Windrush line and a number of bus routes. With Haggerston Park nearby, the flat offers proximity to green spaces and a selection of cafés, bars and restaurants.

### Features

- Two Double Bedrooms
- Two Bathrooms
- Private Balcony
- Modern Design
- Built In Storage
- Natural Light

Whiston Road,  
London, E2

**Third Floor**



Total area (approx.) : 71.9 sq. m (774 sq. ft)  
Total balcony area (approx.) : 6 sq. m (65 sq. ft)

**Dexters**

Shoreditch  
44 Great Eastern Street  
London  
EC2A 3EP  
Sales  
0207 483 6371

Energy Rating: . We aim to make our particulars both accurate and reliable. However they are not guaranteed; nor do they form part of an offer or contract. If you require clarification on any points then please contact us, especially if you're traveling some distance to view. Please note that appliances and heating systems have not been tested and therefore no warranties can be given as to their good working order.

 **RICS** | Regulated  
Estate Agent  
and Letting Agent

[dexters.co.uk](http://dexters.co.uk)