



## Commercial Road, E1

### £575,000

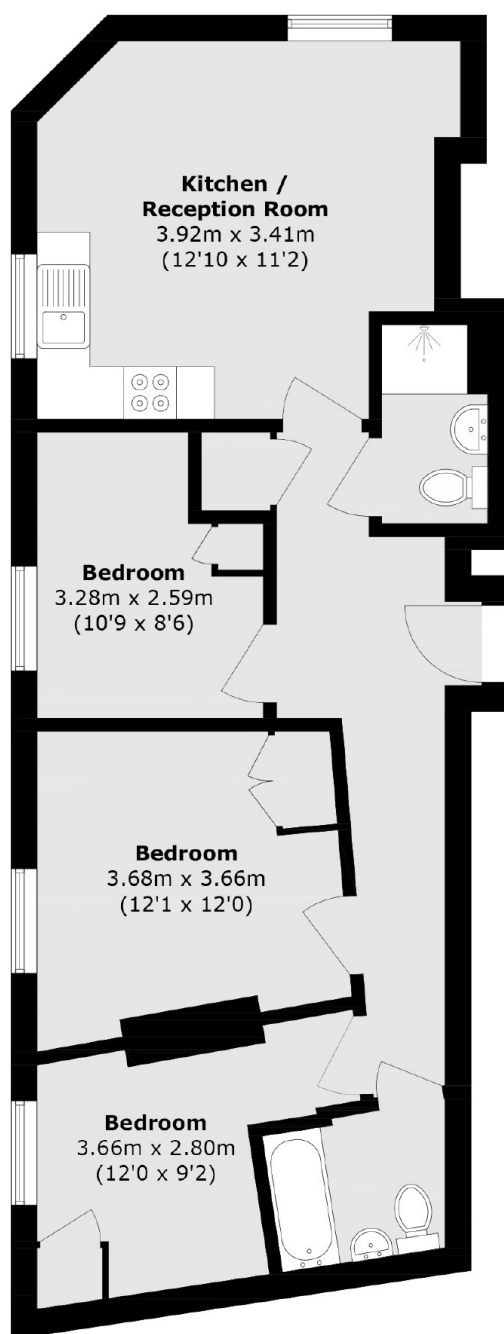
A well-presented, three bedroom apartment, in the historical East End Mission Building. The apartment has an open plan living room with a fully integrated kitchen and space to dine and three good size double bedrooms with in-built storage. The property also offers two bathrooms refurbished to a modern standard. The entire property has a generous amount of natural light made possible from the properties large feature windows and the development has an on-site porter service.

East End Mission is located within a sought after location equidistant from both Canary Wharf and The City providing a wide array of amenities including popular restaurants, bars, shopping opportunities and further entertainment venues. A variety of bus routes can be found on Commercial Road and your closest station is the well connected Limehouse DLR providing easy access to all corners of the City and beyond.

### Features

- Three Bedrooms
- Two Bathrooms
- Modern Interiors
- Open Plan
- Generous Natural Light
- On-site Porter

# Commercial Road, London, E1



Total area (approx.): 67.2 sq. m (723.3 sq. ft)