

Oakley Yard, E2

£425,000

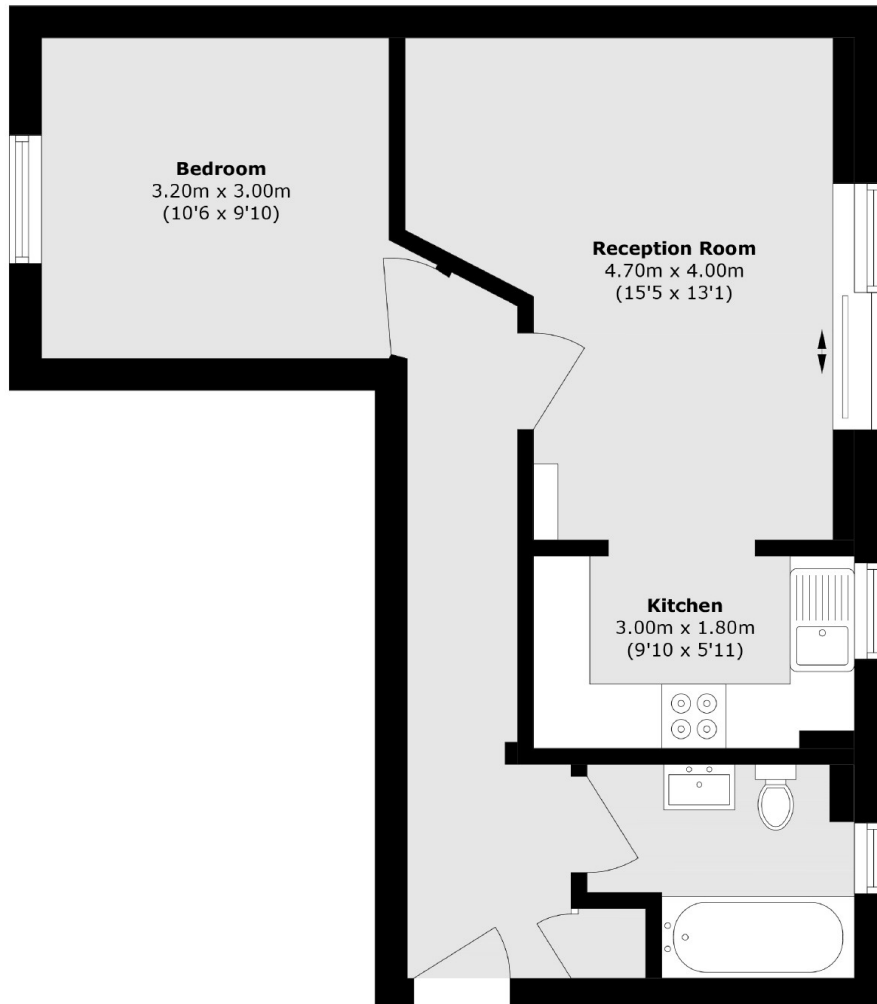
One bedroom apartment with modern interiors set on the top floor of a secure development. The apartment has a large living room with ample space to live and dine and a semi-separate kitchen which has recently been refurbished and has full integrated appliances, this area also gives access to the properties Juliette balcony with open views made possible by the properties elevation within the building. The apartment has one good size double bedroom with in-built storage, plenty of further storage in the hallway and a recent refurbished bathroom. The entire apartment gets a generous amount of natural light complimenting the light tones of this recently renovated space.

Oakley Yard is found on Bacon Street, just off Brick Lane, the flat offers a peaceful setting amidst Shoreditch's vibrant lifestyle. You're only moments from an eclectic mix of cafés, vintage shops, markets, and galleries. Shoreditch High Street Overground and Liverpool Street Station are both within easy reach, offering excellent connectivity across London. The green space, Weavers Fields Gardens, is also close by.

Features

- One bedroom
- Top floor apartment
- Juliette balcony
- Recently refurbished
- Sought after location

Oakley Yard, London, E2



Total area (approx.): 47.0 sq. m (505.9 sq. ft)