

## Hanbury Street, E1

### £550,000

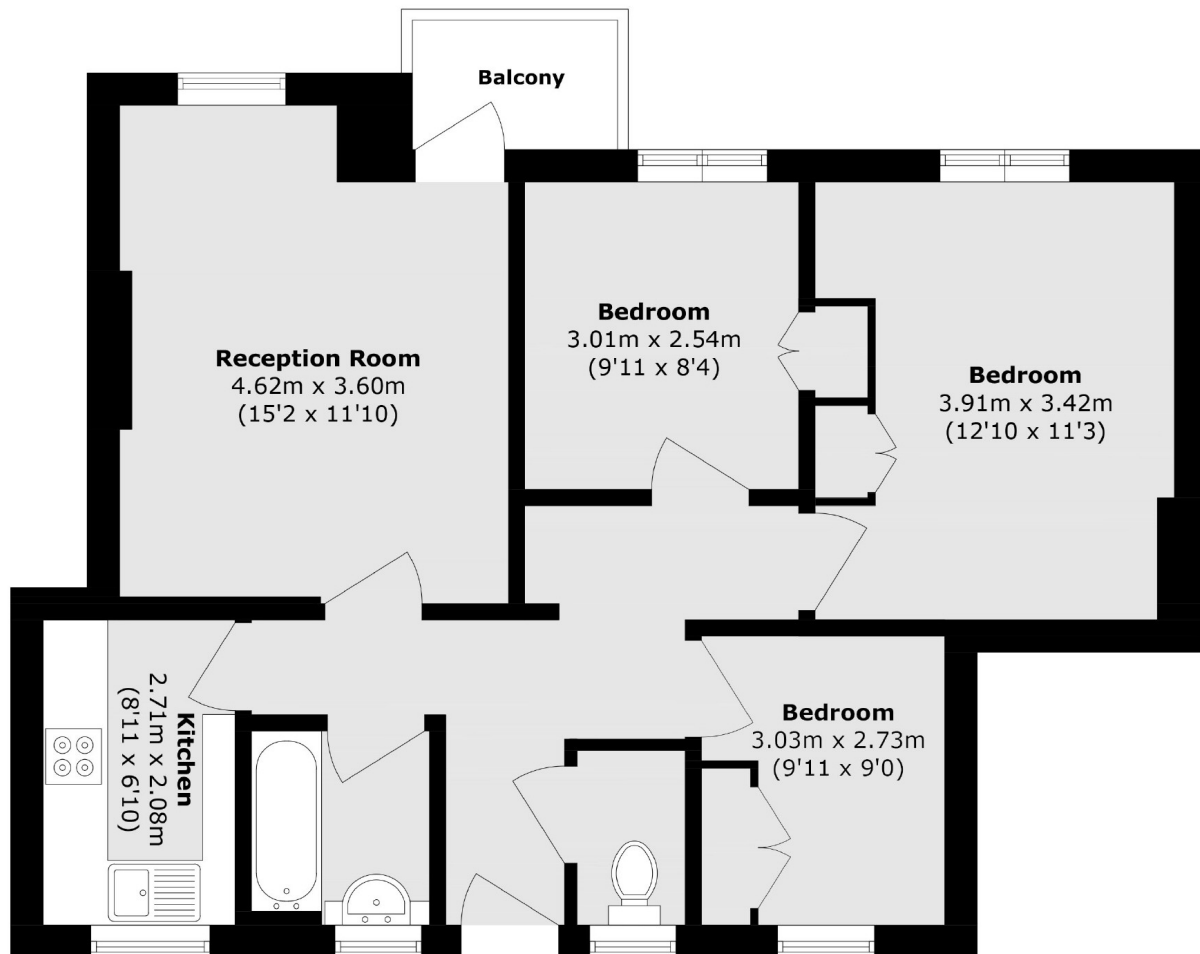
A three bedroom property set within a secure block in a popular location. The property has a large living room with access to a private West facing balcony, a separate, modern kitchen with fully integrated appliances, three double bedrooms, all of which have ample built in storage, an updated family bathroom and a separate WC. The apartment has a generous amount of natural light throughout.

Hanbury Street is located near the popular Brick Lane, Spitalfields and Columbia Road Flower markets, which offer unique shopping opportunities for locals and visitors. Convenient transport links include Aldgate East (Hammersmith&City, District), Liverpool Street (Elizabeth line), Shoreditch High Street (Windrush line) and Whitechapel stations, giving access to all corners of the City and beyond.

### Features

- Three Double Bedrooms
- Secure Block
- Modern Interiors
- Sought After Location
- Great Transport Links

Hanbury Street,  
London, E1



Total area (approx.): 65.0 sq. m (699.6 sq. ft)

Balcony area (approx.): 2.2 sq. m (23.6 sq. ft)