

Mills Court, EC2A

£475 Per week

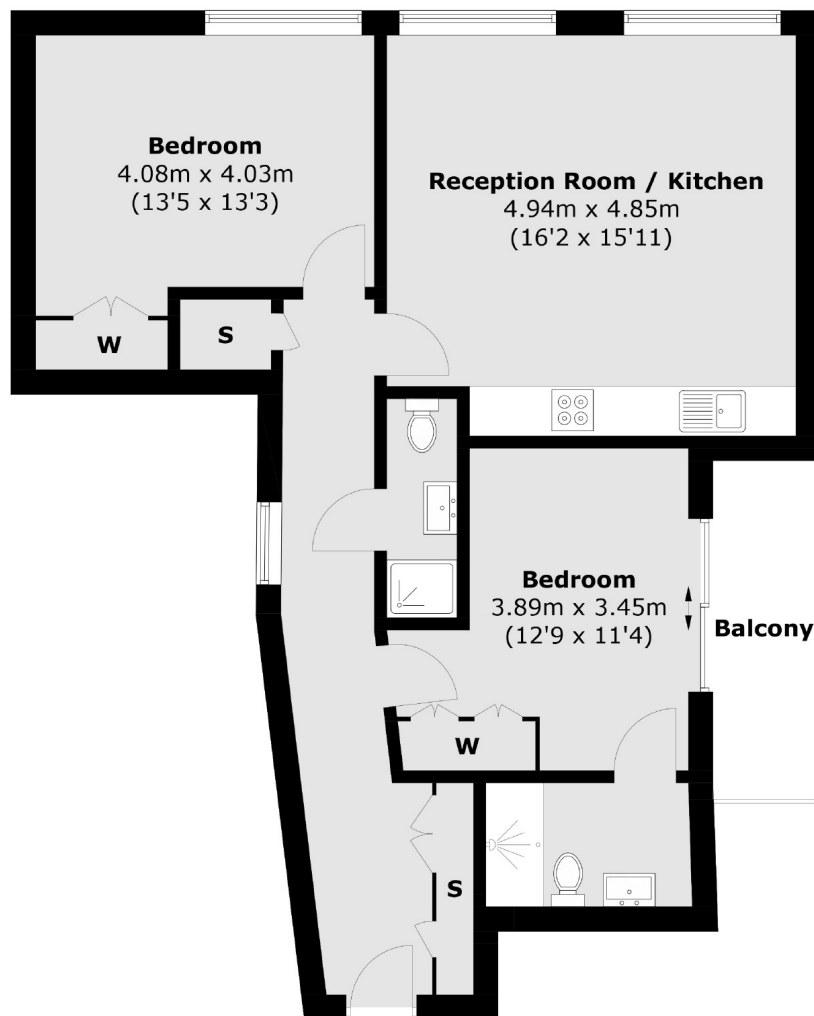
A new two bedroom two bathroom apartment with a private balcony. This warehouse conversion apartment which is set at just under 800 Sq ft is located in the heart of Shoreditch and has exposed brick throughout and is available unfurnished.

The apartment is located on Curtain Road which is in the heart of Shoreditch. The location offers a great choice of cafés, bars and restaurants in the vibrant area of both Shoreditch and Old Street as well as being a short distance to the City.

Features

Just under 800 Sq ft
Second Floor
Unfurnished
New Build
Private Balcony
Great Location

Mills Court, London, EC2A



Second Floor

Total area (approx.): 72 sq. m (775.0 sq. ft)
Balcony : 5.1 sq. m (54.8 sq. ft)

Contact

To arrange a viewing call our office on the number below or visit our website.



Energy Rating: B. We aim to make our particulars both accurate and reliable. However they are not guaranteed; nor do they form part of an offer or contract. If you require clarification on any points then please contact us, especially if you're traveling some distance to view. Please note that appliances and heating systems have not been tested and therefore no warranties can be given as to their good working order.