

Leman Street, E1

£525,000

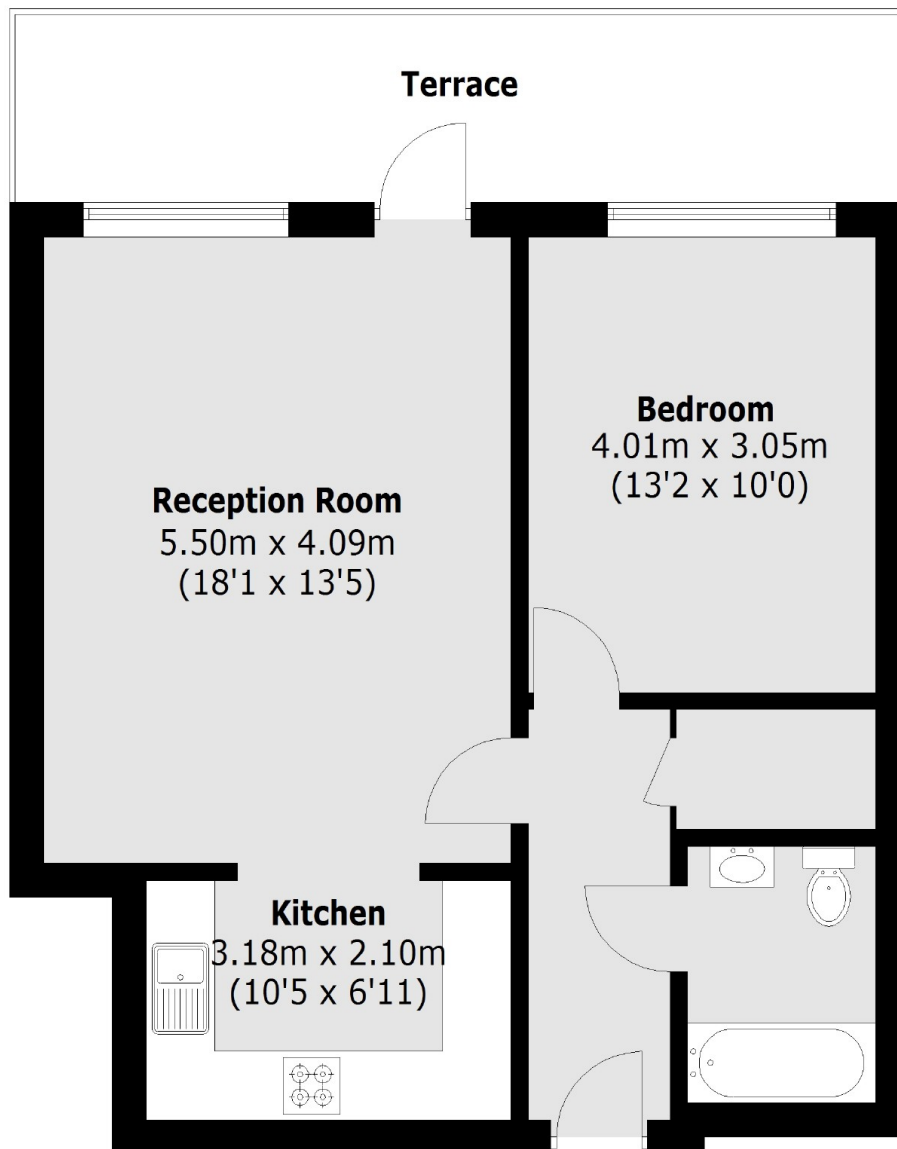
A one bedroom flat located on the ground floor with a private terrace. This property consists of an open plan kitchen/reception room and direct access to a private terrace. There is a modern fitted kitchen with integrated appliances and a storage cupboard in the hallway. Further benefits include floor-to-ceiling windows throughout. The bedroom provides an ample amount of storage.

The surrounding area has multiple supermarkets, shops, restaurants, gyms and has excellent transport links. Part of the Berkeley's Goldman's Fields development offering food, drink, health and entertainment venues close to the City. A short walk to Aldgate East tube station (District and Hammersmith and City lines). Easy walking distance to Tower Hill, Aldgate, Whitechapel and Liverpool Street tube stations.

Features

- One Bedroom
- Private Terrace
- Great Transport Links
- Concierge
- Communal Garden
- Modern Design

Leman Street, London, E1



Ground Floor

Total area (approx.): 54.5 sq. m (586.6 sq. ft)

Terrace: 12.9 sq. m (138.8 sq. ft)