



## Gatesborough Street, EC2A

£2,250 Per calendar month

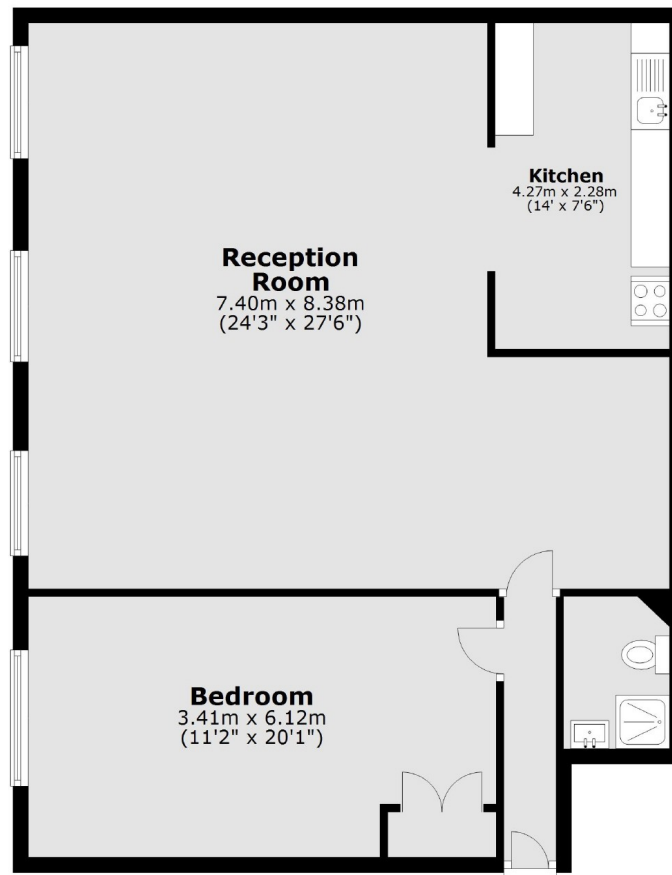
A spacious warehouse conversion in the heart of Shoreditch. The property has a double bedroom, separate kitchen and large living room with dining area.

Gatesborough Street provides access to a fantastic choice of restaurants, cafes and bars on its doorstep. The apartment is a short distance to Liverpool Street and Shoreditch High Street stations.

### Features

- One Bedroom
- One Bathroom
- Warehouse Conversion
- First Floor
- Exposed Brickwork
- Great Location

# Gatesborough Street, London, EC2A



Total area: approx. 89.3 sq. metres (961.5 sq. feet)