



Cheshire Street, E2

£1,250,000

A unique freehold opportunity in the heart of Shoreditch. The property comprises a commercial unit on the ground floor, currently occupied by a popular vintage retail shop generating a strong yield for the owner, along with a four bedroom residential property arranged over a further four floors. The basement level is currently unused but offers ample space to reconfigure and create additional bedrooms or functional rooms.

Cheshire Street is located just off Brick Lane and offers a peaceful setting amidst Shoreditch's vibrant lifestyle. Located moments away from an eclectic mix of cafés, vintage shops, markets, and galleries. Shoreditch High Street Overground and Liverpool Street Station are both

Features

- Unique Freehold Opportunity
- Mixed Residential and Commercial
- Four Bedroom Residential Apartment
- Large Period Property
- Sought After Location

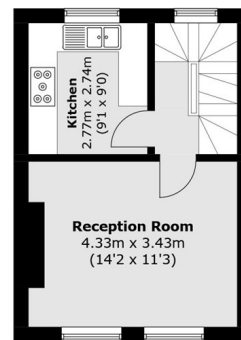
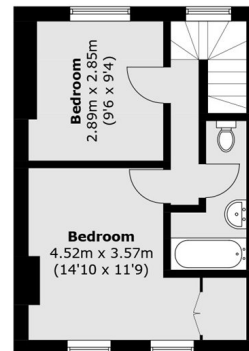
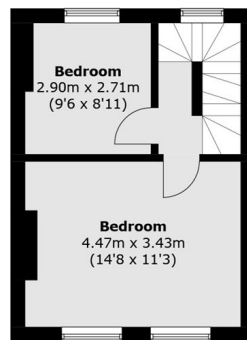
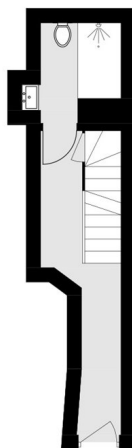
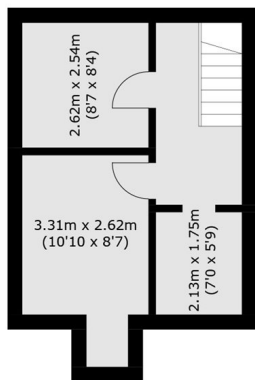
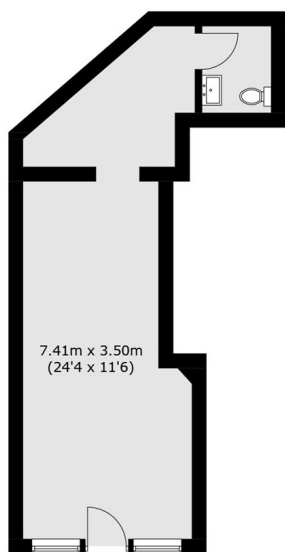


Cheshire Street, E2

On the entrance level there is a modern fitted bathroom, while the first floor features a spacious, bright living room and a separate, modern fitted kitchen. The upper two floors contain the property's four double bedrooms, two on each level with the top floor accommodating the large principal bedroom and a family bathroom.



Cheshire Street, London, E2



(Not Shown In Actual
Location / Orientation)

Total area (approx.): 125.8 sq. m (1,353.9 sq. ft)
Commercial Unit: 33.8 sq. m (363.8 sq. ft)