



## Umberston Street, E1

### £575,000

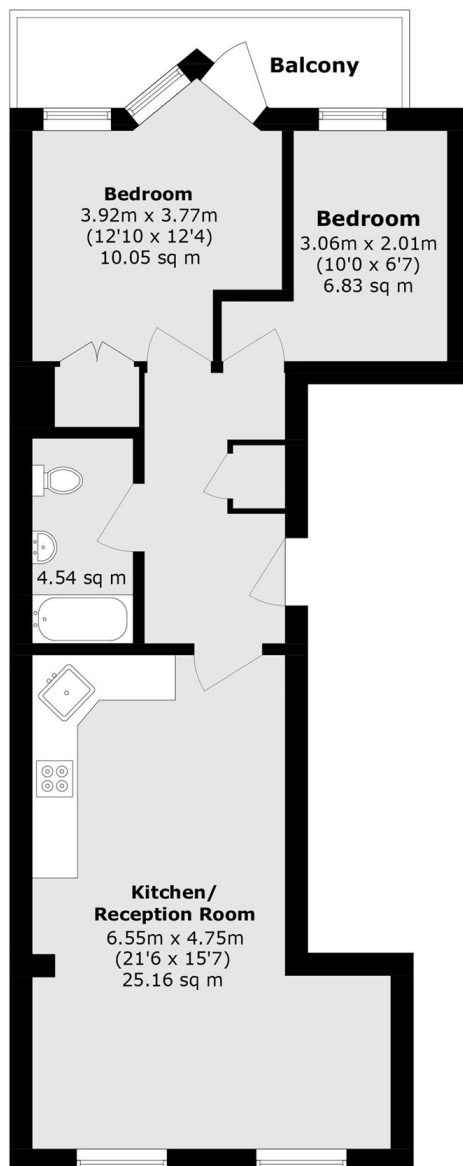
A two bedroom apartment set within a sought after modern development. The property offers a large open plan living room with ample space to dine and a fully integrated kitchen and two double bedrooms, the principle of which has in-built storage and leads out onto the private east facing balcony stretching the width of the apartment. The hallway provides further storage and the modern family bathroom.

This apartment is located under 0.5 miles from Aldgate station on the fringe of the City of London. It is also under 0.5 miles from Whitechapel on the Elizabeth Line, District and Overground. There is an abundance of restaurants, cafés and shops locally.

### Features

- Two Bedroom Apartment
- Modern Development
- Private Balcony
- Bright Interiors
- Sought After Location
- Dual Aspect

# Umberston Street, London, E1



Total area (approx.): 54.9 sq. m (590.9 sq. ft)

Balcony area (approx.): 5.3 sq. m (57.0 sq. ft)