



High Timber Street, EC4V  
£2,250,000

**Dexters**



## High Timber Street, EC4V

A well-presented, three double bedroom apartment with an unobstructed view of the Thames, located in Sir John Lyon House. The apartment has a large south-facing, dual-aspect reception room with bi-folding doors opening onto a private balcony with uninterrupted views of the River Thames, The Tate Modern, The Shard and the Globe Theatre. To the rear, the apartment has three double bedrooms, two with en-suite bathrooms and one guest bathroom. The property benefits from underfloor heating, comfort cooling, and secure parking.

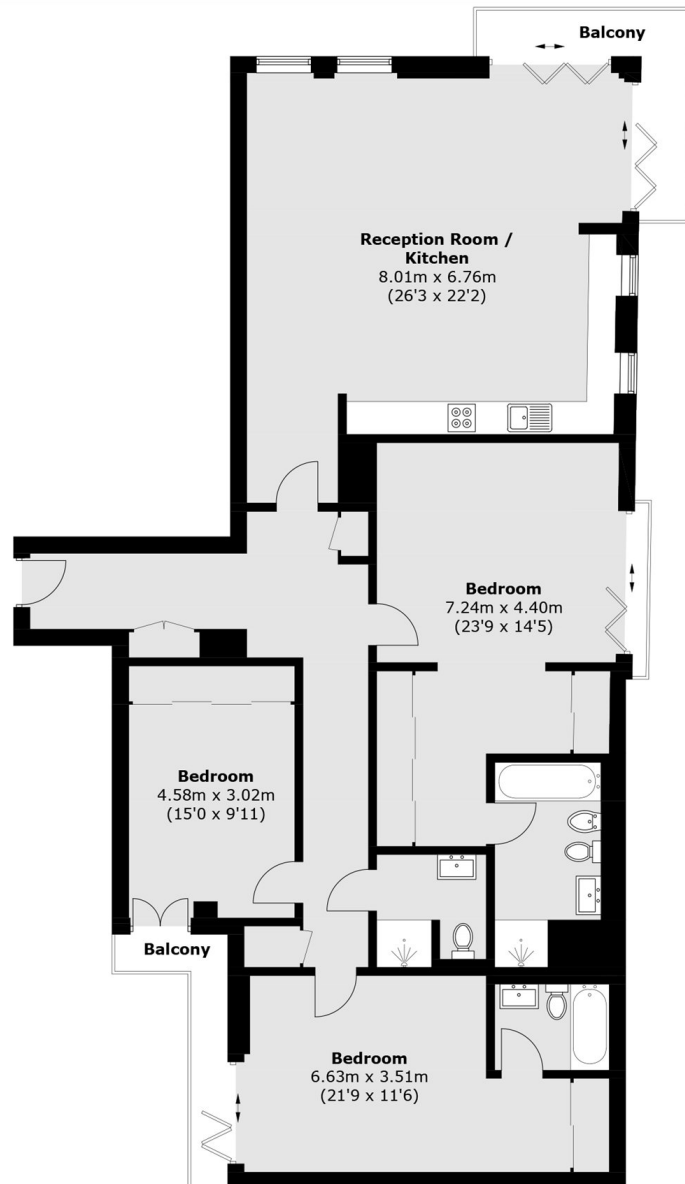
Sir John Lyon House is on the north bank of the River Thames, close to the Millennium Bridge. The City of London, St Paul's Cathedral and the Bank of England are a short walk away, with Mansion House and St Paul's underground stations being the closest public transport.

### Features

- Three Double Bedrooms
- Unobstructed River Views
- Great Location
- Off Street Parking
- Private Balcony
- Modern



# High Timber Street, London, EC4V



## Second Floor

Total area (approx.): 151.6 sq. m (1,631.8 sq. ft)  
Balcony area : 9.9 sq. m (106.5 sq. ft)