



Golden Lane Estate, EC1Y

£750,000

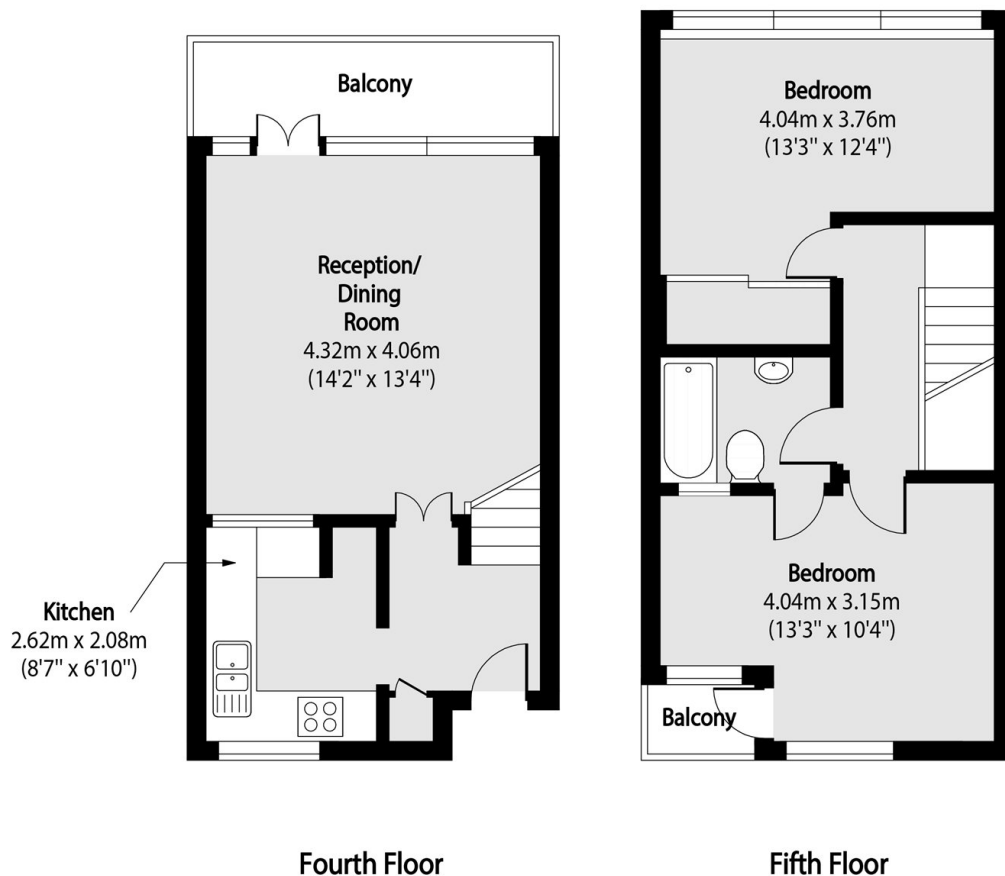
A top floor, two bedroom apartment in the Grade II-listed Hatfield House. The entry level is comprised of a south-facing reception room with views over the Barbican and the kitchen which features an original 1950s hatch connecting to the living room. The two double bedrooms with built-in storage are located upstairs, along with the family bathroom with a feature skylight. Residents can access communal amenities including gardens, allotments, a social centre, and sports facilities such as a swimming pool, gym, tennis courts, and badminton courts.

The Barbican Underground station (Circle, Hammersmith&City, Metropolitan, Elizabeth), and Farringdon station provide easy access to national rail services with easy access to Gatwick and Luton airports. The Barbican Centre, with its concert hall, theatres and cinema, is on the doorstep, as well as Whitecross Street food market.

Features

Top Floor Flat
Split Level
Dual Aspect
Wooden Floor
South Facing
Grade II-Listed

Golden Lane Estate, London, EC1Y



Total area (approx): 61.41 sq m (661 sq. ft)

Balcony total area (approx): 6.04 sq m (65 sq. ft)