



Blackall Street, EC2A

£600,000

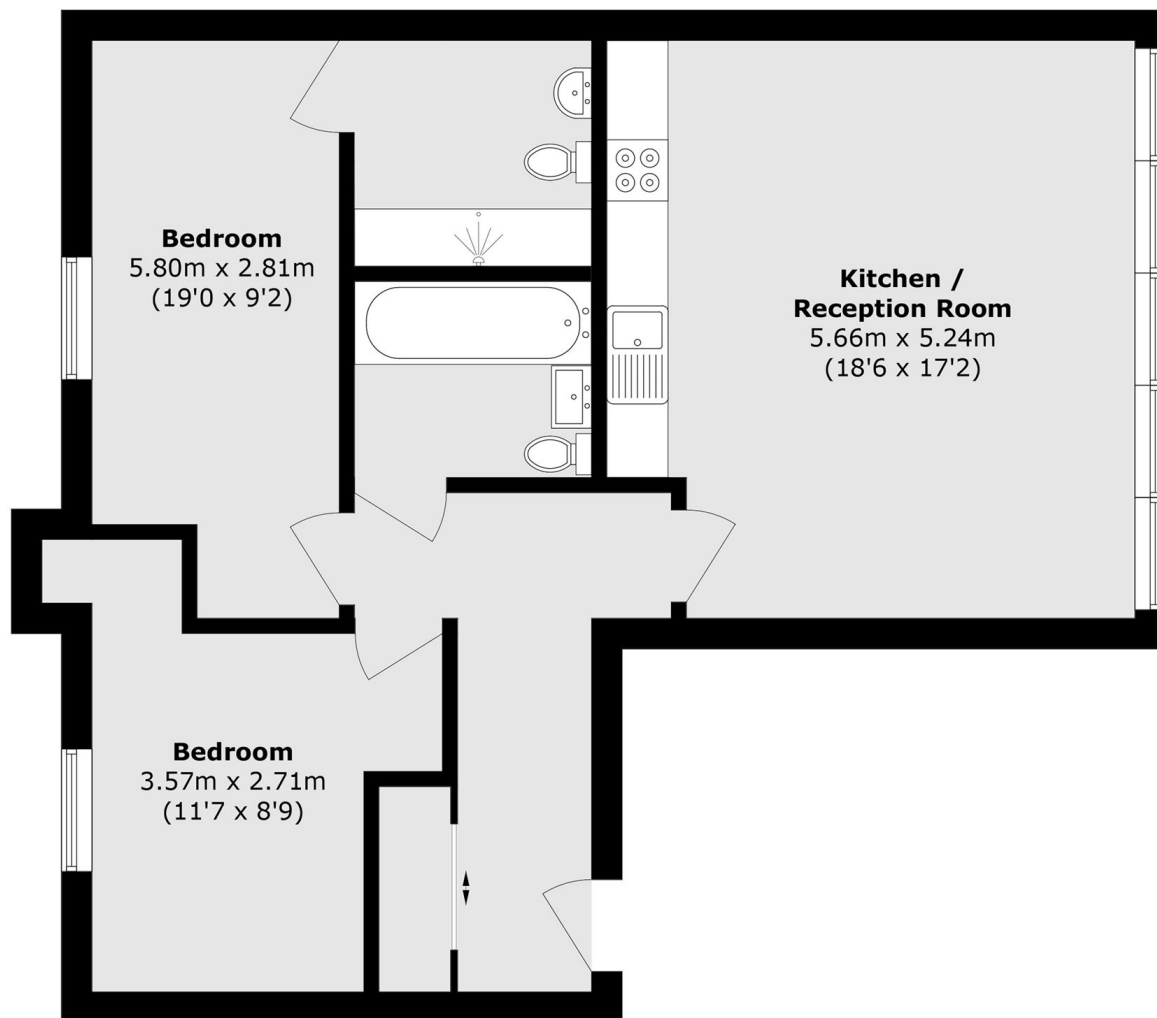
A modern two bedroom apartment located on the third floor. The accommodation is comprised of a living/dining area with dual aspect windows and an integrated contemporary kitchen, a family bathroom, and two double bedrooms, with the larger bedroom featuring an en-suite.

Chamberlain House is situated between the streets of West Shoreditch and The City. Old Street and Moorgate Underground station are a short walk away, running Northern and DLR Line services across the city. Liverpool Street Station provides access to the Elizabeth, Central, Hammersmith & City and Metropolitan lines, as well as nationwide National Rail services.

Features

- Contemporary kitchen
- Modern Development
- Central Location
- Wooden Floors
- Dual Aspect
- Open Plan

Blackall Street, London, EC2A



Total area (approx.): 75.9 sq. m (816.9 sq. ft)