



Paradise Row, E2

£1,150,000

Dexters



Paradise Row, E2

Five bedroom freehold townhouse on the prestigious Paradise Row. The house is arranged over five floors and has been renovated throughout. The space that this house offers is unparalleled in the local area as its location. The property has five bedrooms, three bathrooms, two of which are en-suite and two separate living areas with views over Paradise Park.

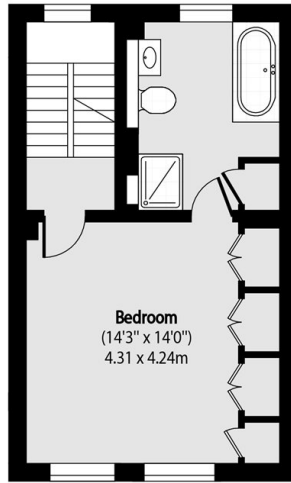
The property is situated moments from Bethnal Green underground station for links around the city, while a range of shops, bars, cafe's and further amenities and entertainment venues can be found along Cambridge Heath Road and Bethnal Green Road and the nearby Shoreditch and City.

Features

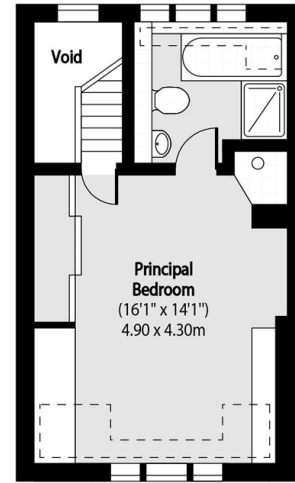
- Freehold Townhouse
- Five bedrooms
- Three bathrooms
- Significant living space
- Park views
- Sought after location



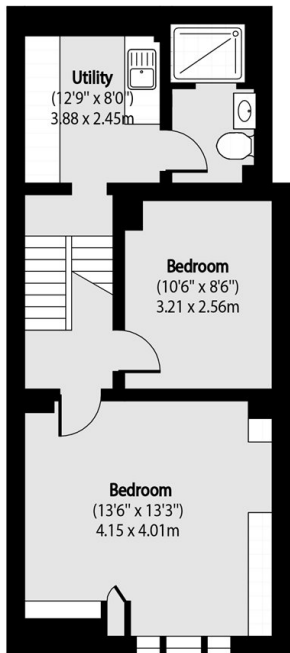
Paradise Row, London, E2



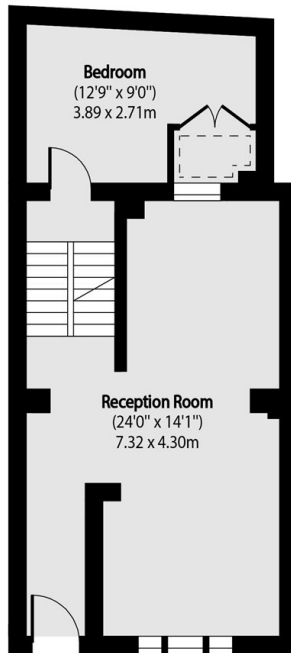
Second Floor



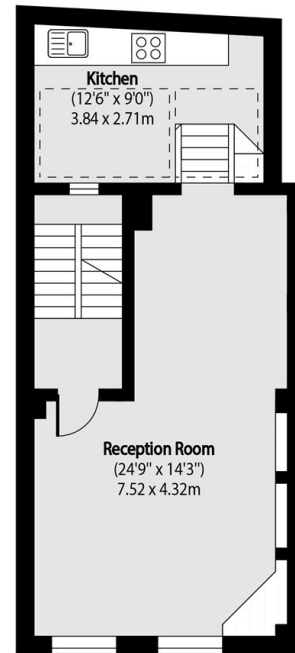
Third Floor



Lower Ground Floor



Ground Floor



First Floor

Total area (approx): 189.36 sq m (2038 sq. ft)
(Excluding Void)