



Britton Street, EC1M

£840,000

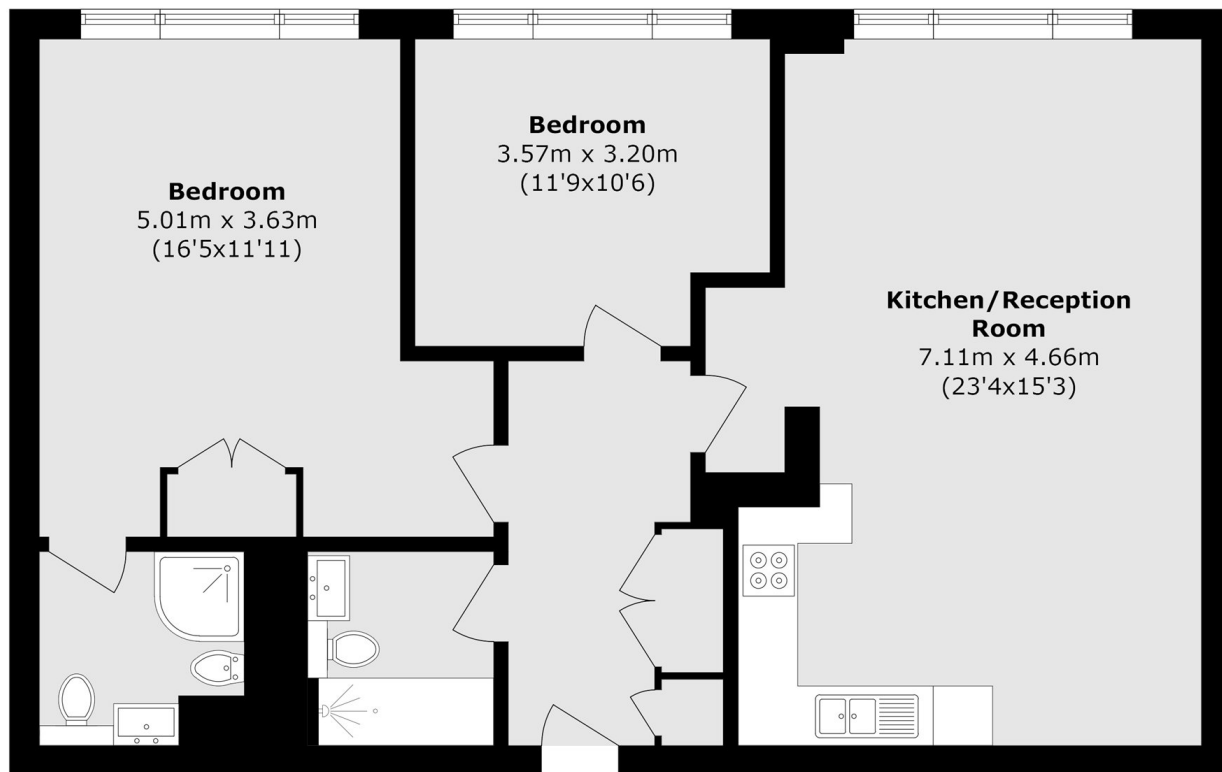
A well presented two bedroom apartment, located on the first floor of City Pavilion. The apartment features a open plan living room with a fully integrated kitchen. The principal bedroom offers ample built in storage and access to an en-suite whilst the second bedroom is also a good size double. The apartment benefits from floor to ceiling windows.

City Pavilion has access to a range of transport links. Farringdon underground and main line station provide access to the Circle, Metropolitan, Hammersmith and City, National rail and Elizabeth Line, making it one of the only stations in London that offers north-south as well as east west connections. With great shopping and tremendous diversity of acclaimed restaurants, bars, galleries and wine bars Clerkenwell remains one of London's most sought after and convenient locations.

Features

Two Bedrooms
Two bathrooms
Open Plan
24hr Concierge
Built in Wardrobes
Sought After Location

Britton Street,
London, EC1M



Total area (approx.): 83.1 sq. m (894.4 sq. ft)

Dexters

Shoreditch
44 Great Eastern Street
London
EC2A 3EP
Sales
0207 483 6371

Energy Rating: . We aim to make our particulars both accurate and reliable. However they are not guaranteed; nor do they form part of an offer or contract. If you require clarification on any points then please contact us, especially if you're traveling some distance to view. Please note that appliances and heating systems have not been tested and therefore no warranties can be given as to their good working order.

 **RICS** | Regulated
Estate Agent
and Letting Agent

[dexters.co.uk](https://www.dexters.co.uk)