



Palmers Road, E2

£600,000

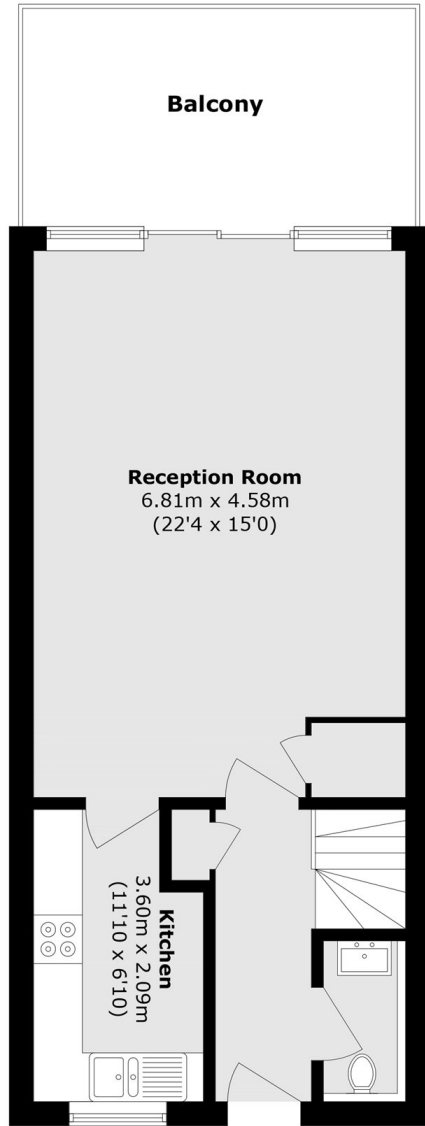
Two bedroom split level apartment with canal views in sought after development. The apartment has a large living room with ample space to dine highlighted by its unique double height ceilings made possible by the properties mezzanine level. This area, along with the rest of the property, gets generous natural light and leads out onto the apartments private terrace which views straight onto Regents Canal and over to Mile End Park, this level also has the semi-separate, fully integrated kitchen and downstairs WC. The upper floor has the apartments two double bedrooms which have ample built in storage and the family bathroom.

Set on the sought after Palmers Road, the property gives convenient access to the amenities found in the close by Roman Road, Bethnal Green and Bow which include an array of boutique shops, cafe's, pubs, restaurants and many other entertainment venues. The famous Victoria Park and Regents Canal are close by for tranquil walks and

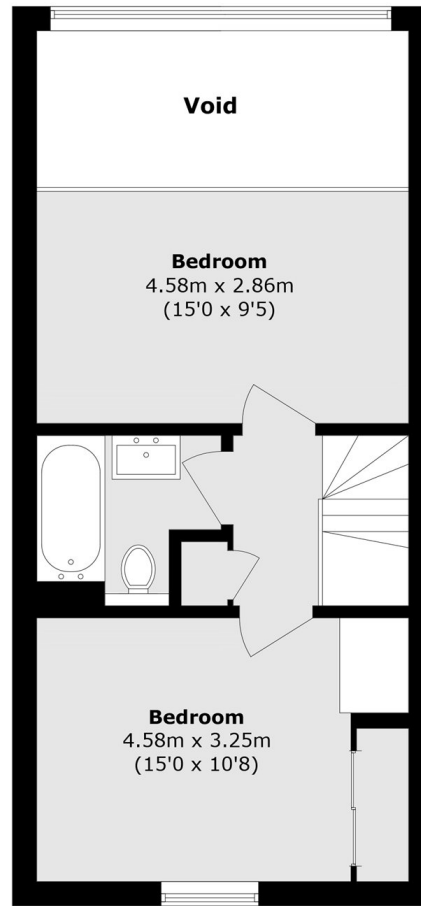
Features

- Two bedrooms
- One bathroom + WC
- Private terrace with views
- Bright interiors
- Sought after location
- Secure underground parking space

Palmers Road,
London, E2



First Floor



Second Floor

Total area (approx.): 86.9 sq. m (935.3 sq. ft)
Balcony area (approx.): 13 sq. m (139.9 sq. ft)
(Excluding Void)