



Principal Place, EC2A

£1,200,000

A two double bedroom, two bathroom apartment in Principal Tower with unobstructed west-facing views. The apartment comprises two large double bedrooms, one with en-suit, a family bathroom and an open plan kitchen/living room that leads onto the private balcony.

Principle Tower is one of the area's most sought-after residential developments, in part due to features including the 24-hour concierge, residents' gym, pool, sauna and steam room, as well as communal meeting areas.

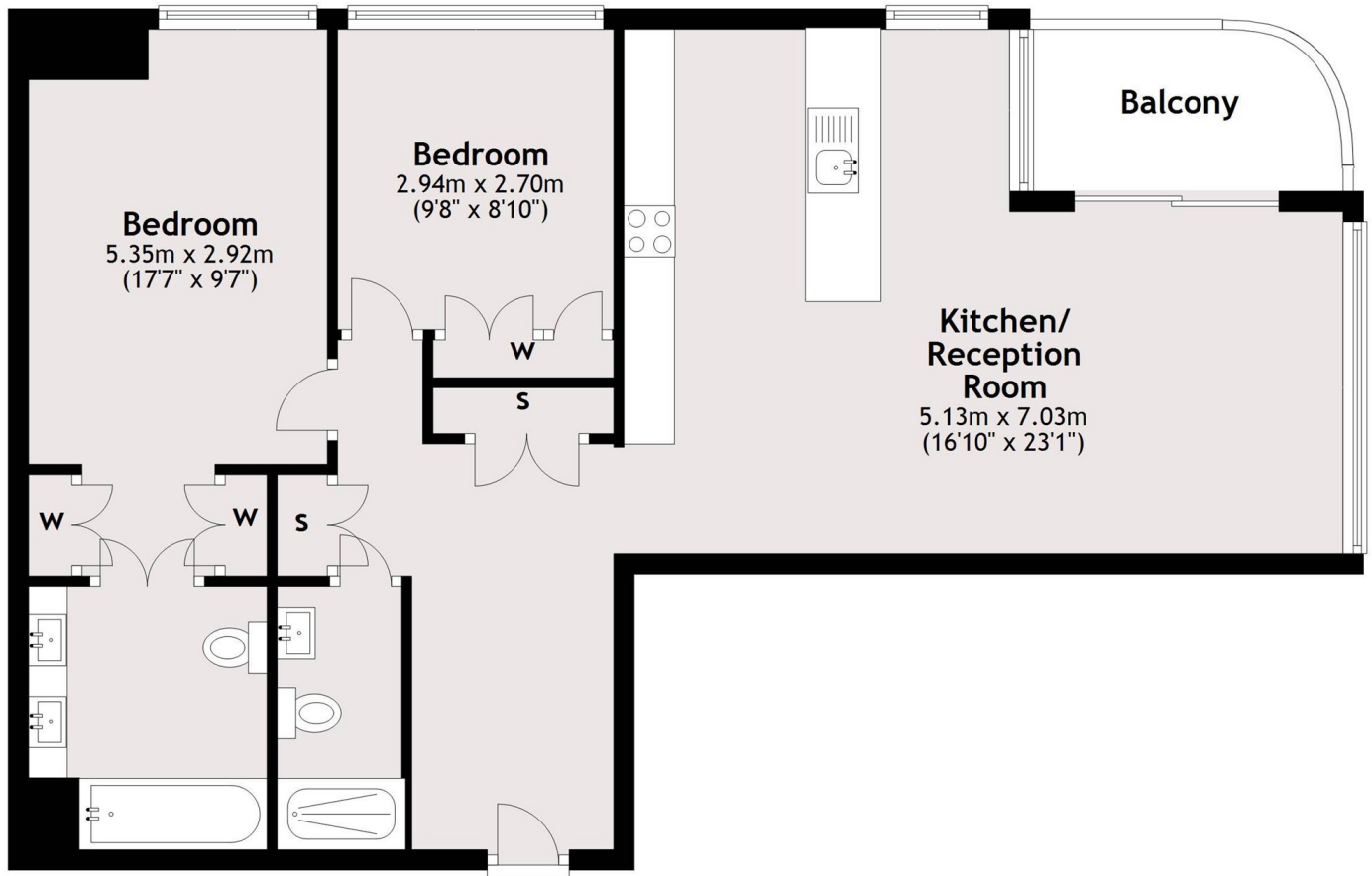
Principal Tower is on the fringe of the City, just moments from Liverpool Street Station and Shoreditch High Street Overground. The development is also very close to a number of popular bars and restaurants in the area, as well as Spitalfields Market.

Features

- Two Double Bedrooms
- Two Bathroom
- 21st Floor
- Balcony
- Health Club
- Concierge

Principal Place, London, EC2A

Twenty First Floor



Main area: Approx. 76.7 sq. metres (825.6 sq. feet)
Plus balconies, approx. 4.5 sq. metres (48.8 sq. feet)

Dexters

Shoreditch
44 Great Eastern Street
London
EC2A 3EP
Sales
0207 483 6371

Energy Rating: . We aim to make our particulars both accurate and reliable. However they are not guaranteed; nor do they form part of an offer or contract. If you require clarification on any points then please contact us, especially if you're traveling some distance to view. Please note that appliances and heating systems have not been tested and therefore no warranties can be given as to their good working order.

 **RICS** | Regulated
Estate Agent
and Letting Agent

[dexters.co.uk](https://www.dexters.co.uk)