

## Wood Close, E2

### £700,000

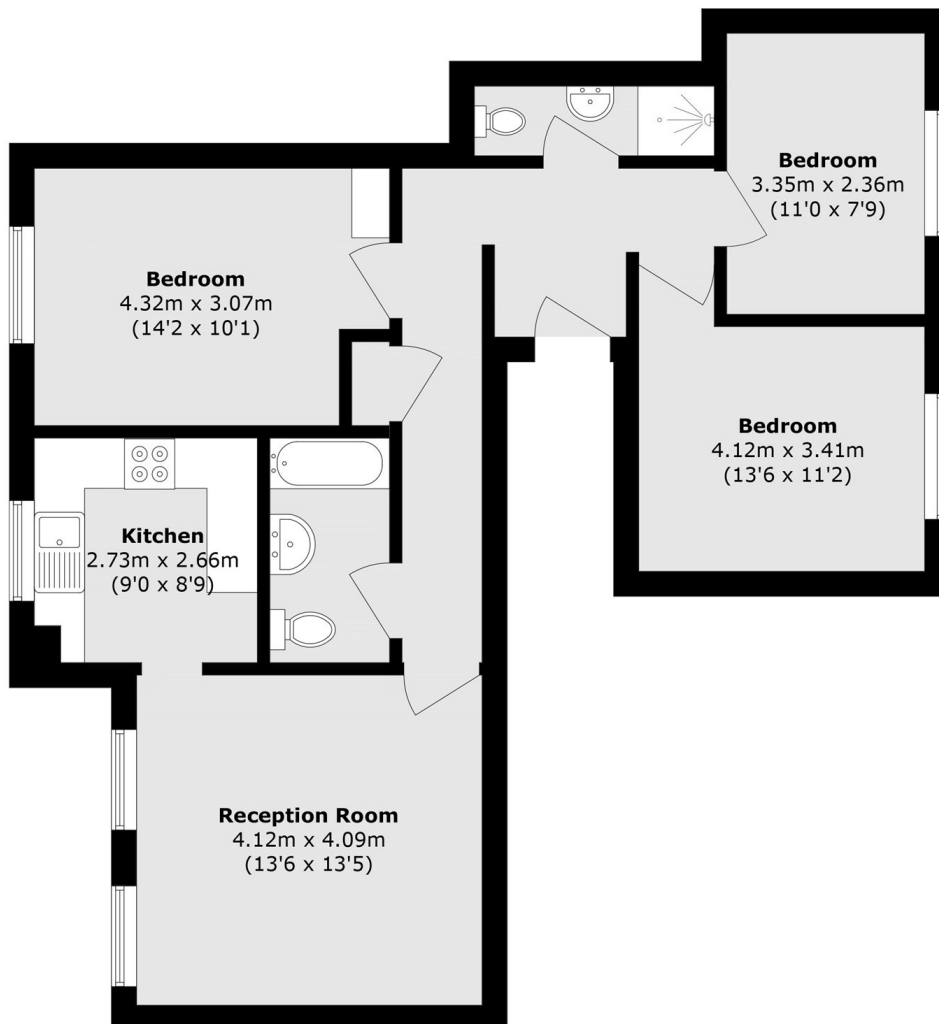
A top floor three bedroom, two bathroom apartment, inside a quiet, gated modern development in a sought after location. Being on the top floor of the building, the flat enjoys great natural light and an elevated sense of privacy. The apartment has a spacious living room with ample space to dine and a semi-separate, modern and fully integrated kitchen. The apartment has three double bedrooms and has two bathrooms which is a family bathroom and a shower room. The apartment comes with a share in the freehold.

Wood Close is a quiet one-way street a short distance to vibrant Shoreditch and Brick Lane and its fantastic choice of bars, restaurants and nightlife. Redchurch Street, Columbia Road and Spitalfields Market are also within walking distance. Shoreditch High Street and Bethnal Green Overground Stations are less than half a mile away and Liverpool Street, Bethnal Green Underground stations are less than one mile.

### Features

- Three double bedrooms
- Two bathrooms
- Top floor
- Gated development
- Sought after location

# Wood Close, London, E2



Total area (approx.): 75.2 sq. m (809.4 sq. ft)