



## Cadmium Square, E2

£650,000

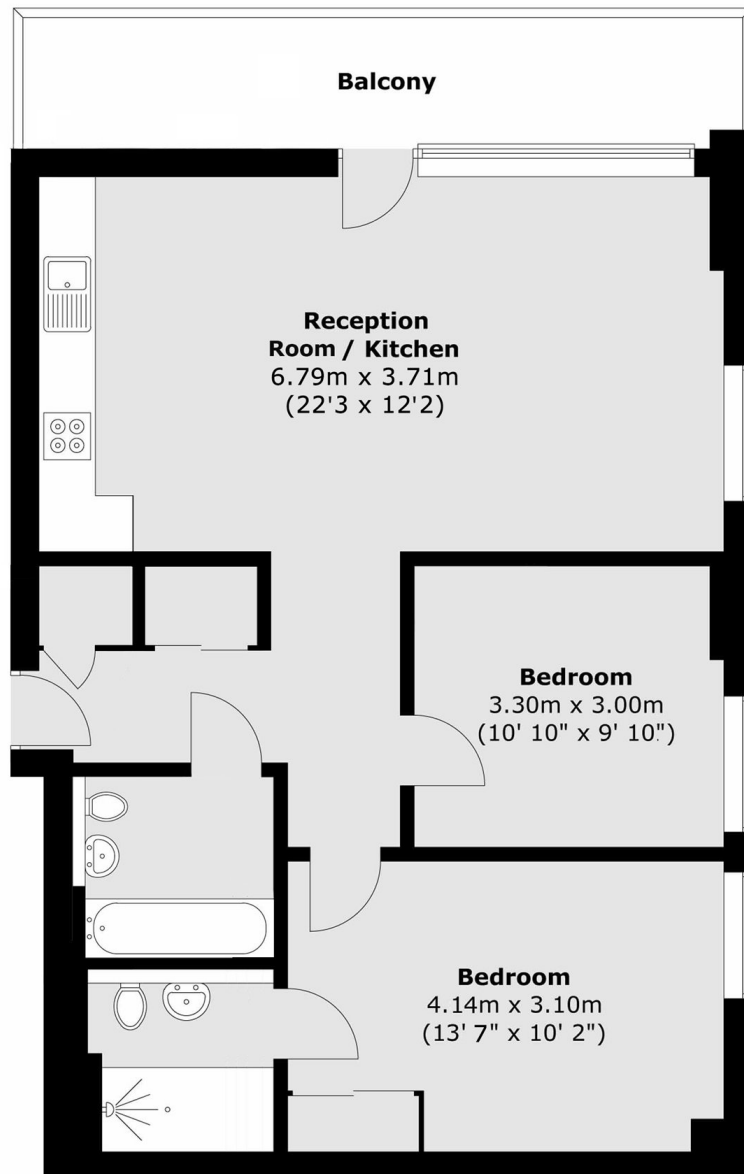
Two bedroom, two bathroom apartment set on the 15th floor of Grand Regent Tower, the pinnacle building on this modern, sought after, Palmers Road development. This apartment has a spacious, open plan living area with space to dine and a fully integrated kitchen. The open plan area leads out onto the apartments private balcony which spans the width of the apartment and has far-reaching City views. The property has two double bedrooms with ample inbuilt storage and the principal bedroom is en-suite. The hallway has plenty of further storage and the stylish family bathroom. The apartment comes with a secure underground parking space.

Grand Regent Tower is ideally located on the sought after Palmers Road, just a short distance from Mile End (District, Hammersmith&City) and Bethnal Green (Central). Victoria Park is close by along with local coffee shops and restaurants.

### Features

- Two Bedrooms
- Two Bathrooms
- Private Balcony
- 15th Floor
- Far reaching City Views
- On-site concierge
- Allocated underground parking space

# Cadmium Square, London, E2



Total area (approx.): 67.1 sq. m (722.2 sq. ft)  
Total balcony area (approx.) : 9.4 sq. m (101 sq. ft)

## Dexters

Shoreditch  
44 Great Eastern Street  
London  
EC2A 3EP  
Sales  
0207 483 6371

Energy Rating: . We aim to make our particulars both accurate and reliable. However they are not guaranteed; nor do they form part of an offer or contract. If you require clarification on any points then please contact us, especially if you're traveling some distance to view. Please note that appliances and heating systems have not been tested and therefore no warranties can be given as to their good working order.

 **RICS** | Regulated  
Estate Agent  
and Letting Agent

dexters.co.uk