

Shoreditch High Street, E1 £900,000

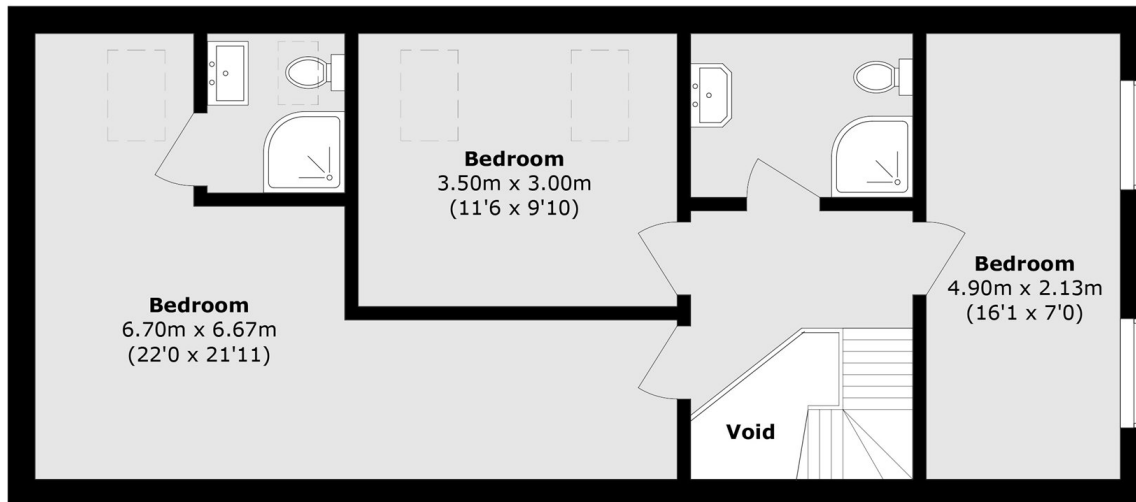
Large four bedroom, three bathroom property with its own private entrance set within a sought after central location. The property is accessed via its own entrance just off of Shoreditch High Street, this gives access to the properties private courtyard which leads on to the apartments main entrance. The ground floor consists of the spacious open plan living room with ample space to dine and a fully integrated kitchen, it also has one of the properties bright double bedrooms and shower room. The second floor has the further three double bedrooms, the principle bedroom benefits from being en-suite. Two of these bedrooms have skylights allowing for generous natural light throughout this floor, this floor also has another shower room.

Set in a very central location on Shoreditch High Street giving immediate access to the wide range of bars, restaurants, shopping venues and further entertainment venues found in Shoreditch and The City. Liverpool Street and Shoreditch High Street stations are within a short walking distance giving access to all corners of the City and beyond.

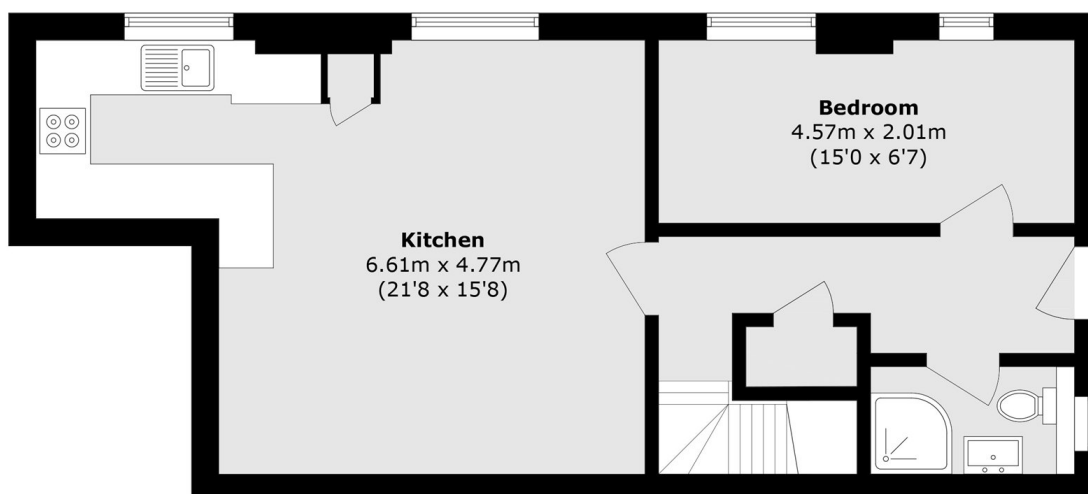
Features

- Four bedrooms
- Three shower rooms
- Private entrance and courtyard
- Modern interiors
- Generous natural light
- Sought after central location

Shoreditch High Street, London, E1



First Floor



Ground Floor

Total area (approx.): 107.1 sq. m (1152.8 sq. ft)