



Buckhurst Street, E2

£375,000

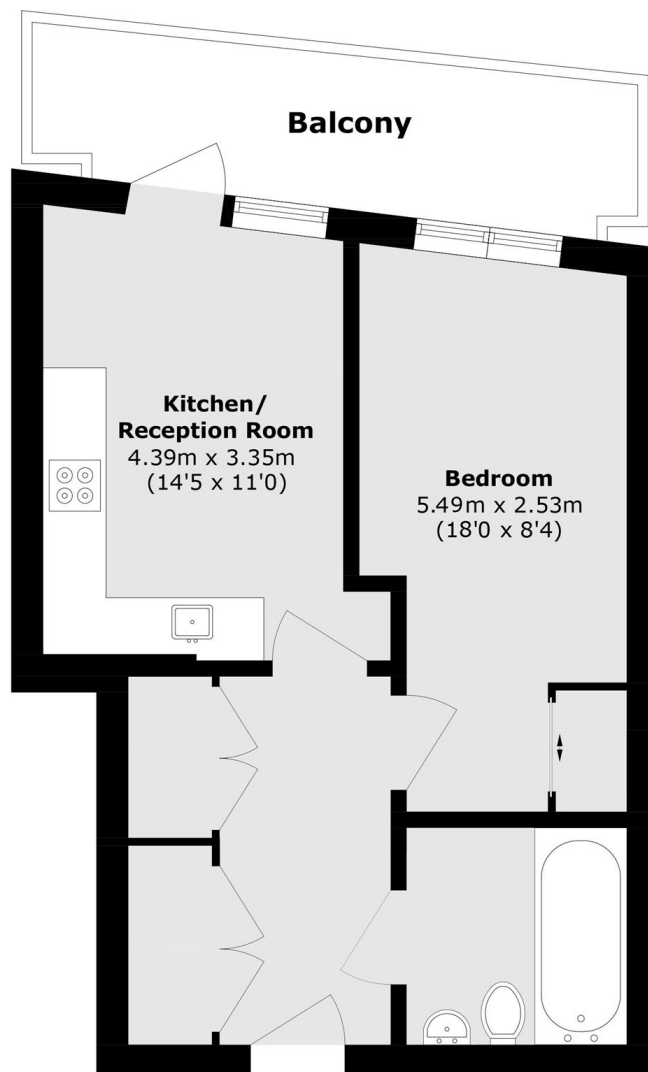
A well-presented one-bedroom apartment in Friesian House. The apartment comprises an open plan kitchen/living room which leads out onto the properties private balcony and a double bedroom with on-built storage. The property also benefits from generous storage cupboards and a modern family bathroom.

Friesian House is located a short walk from Bethnal Green Underground (Central Line), Bethnal Green Overground, and Whitechapel Station, which now includes the Elizabeth Line. This makes commuting into the City, Canary Wharf, and the West End incredibly quick and convenient, while also providing easy access to Heathrow Airport and beyond.

Features

- Secure Entry
- Modern Development
- Fantastic Transport Links
- Private Balcony
- Contemporary Kitchen
- One Bedroom Apartment

Buckhurst Street, London, E2



Total area (approx.): 39.6 sq. m (426.2 sq. ft)

Balcony area (approx.): 8.2 sq. m (88.2 sq. ft)