



## Roman Road, E2

£375,000

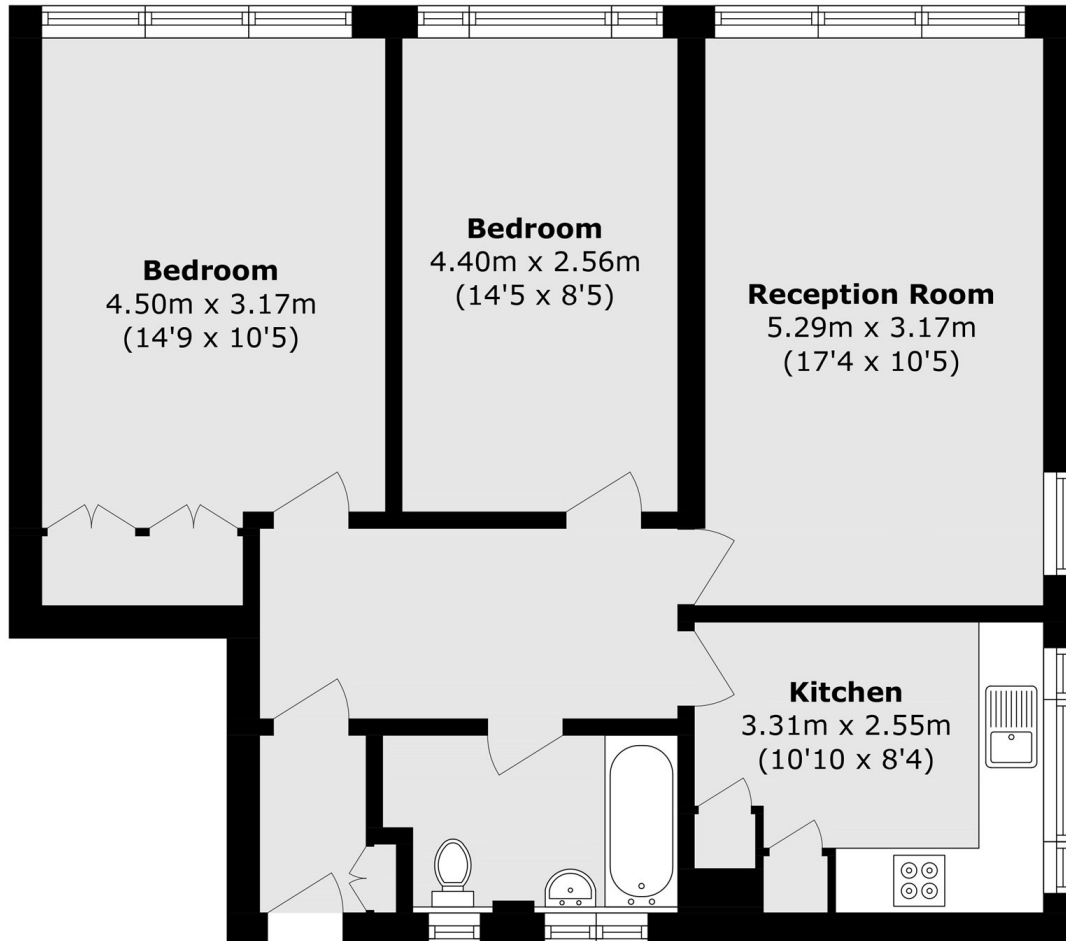
Two bedroom apartment with modern interiors set in sought after location. The apartment has a spacious and bright living room with ample space to dine and a modernised separate eat-in kitchen. The property also has two double bedrooms, the master has ample built in storage and again both benefit from a generous amount of natural light via the large windows found throughout. In the hallway you will find further storage as well as the family bathroom. The apartment is offered with a share of freehold.

The apartment is located a short distance to Bethnal Green tube station. Also located closely to all local bars, cafés and restaurants of Shoreditch, Bethnal Green and Old Street. Victoria Park is also nearby as well as walks via the Regents Canal.

### Features

- Two bedrooms
- One bathroom
- Separate eat-in kitchen
- Modernised throughout
- Generous natural light
- Share of freehold

# Roman Road, London, E2



Total area (approx.): 69.6 sq. m (749.1 sq. ft)