



## Drysdale Street, N1

£800,000

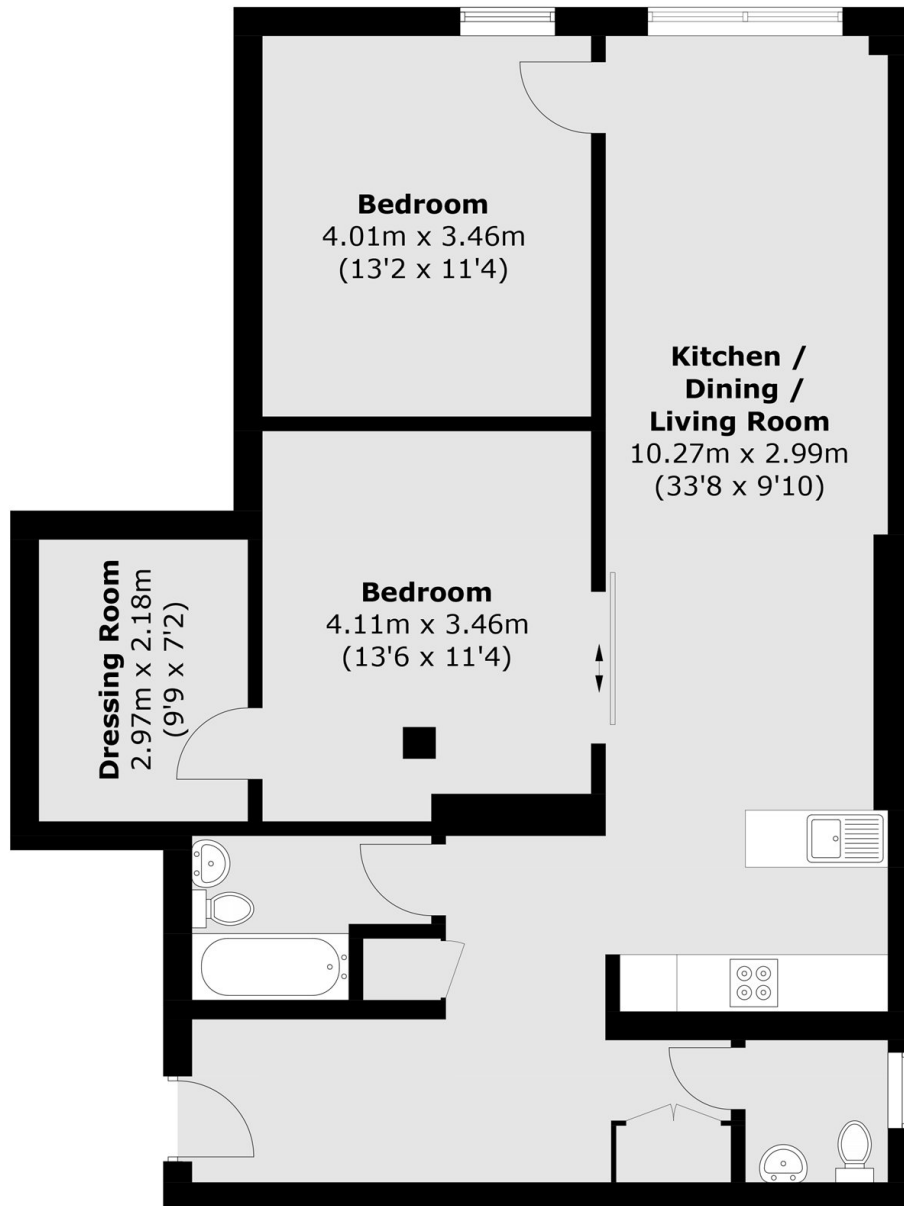
A modern two-bedroom two-bathroom apartment located on the second floor in Timber Yard. The apartment comprises two double bedrooms, one with a walk-in wardrobe, an open plan kitchen/living room, two family bathrooms and inbuilt storage.

Located a very short distance from Hoxton Square, this apartment is in the heart of Shoreditch/Old Street with a host of bars, cafes and restaurants.

### Features

- Modern
- Two Double Bedrooms
- Two Bathroom
- Furnished
- Secure Entry
- Great Location

Drysdale Street,  
London, N1



Total area (approx.): 89.3 sq. m (961.2 sq. ft)