



Sandys Row, E1

£640,000

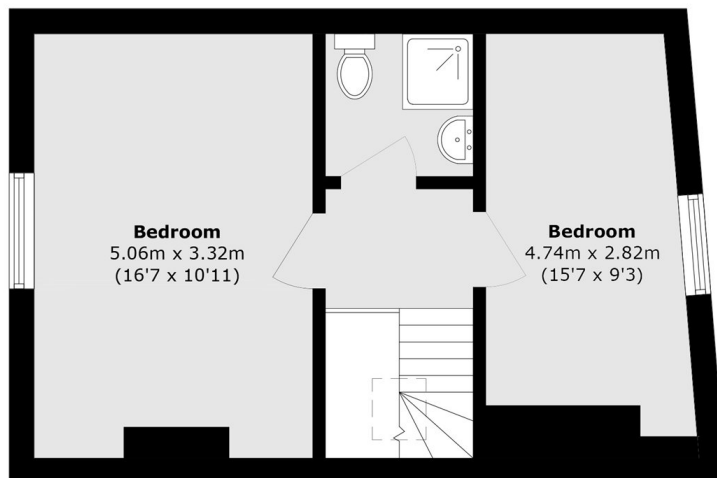
Charming two bedroom property arranged over two floors set within a sought after location on the periphery of the City of London. On the first floor of the property you have the spacious living room and separate eat in kitchen with fully integrated appliances. The second floor features two proportionate double bedrooms and the family bathroom.

Sandy's Row is a popular street set within a sought after location on the lead in to the City of London. You have a wide array of bars, restaurants, shopping opportunities and further entertainment venues on your doorstep. Liverpool Street station is just one road away giving access to all corners of the City and beyond making this property incredibly convenient for the resident.

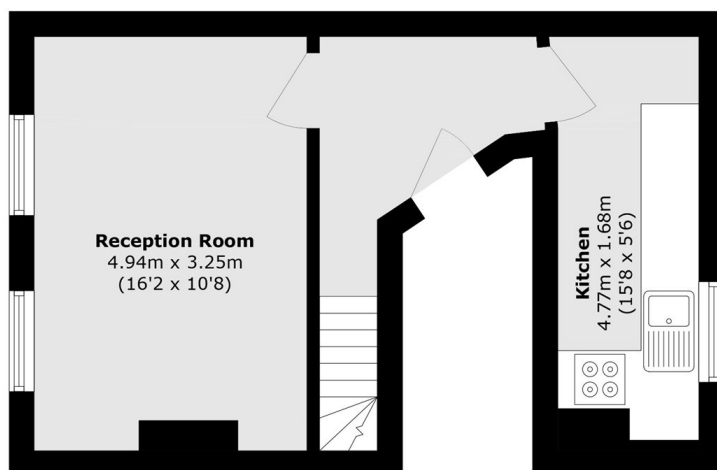
Features

Two Bedroom Property
Arranged Over Two Floors
Sought After Location
Fully Integrated Kitchen
Close Transport Links
Dual Aspect

Sandys Row, London, E1



Second Floor



First Floor

Total area (approx.): 70.8 sq. m (762.0 sq. ft)