



Ford Square, E1

£450,000

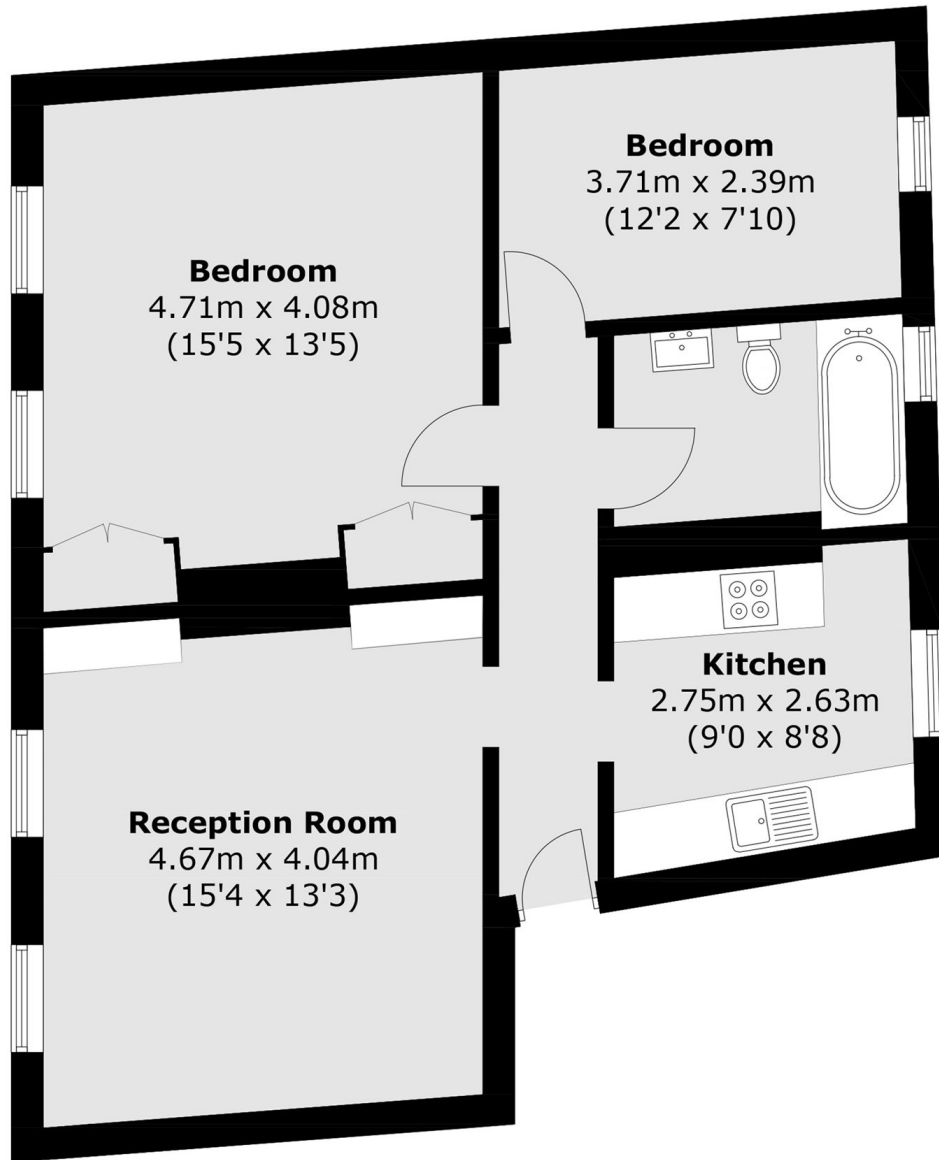
Two bedroom apartment overlooking the famed Ford Square Gardens. The property has a large, bright living room with ample space to dine and a separate, modernised, fully integrated kitchen. The apartment has two double bedrooms, the principle bedroom has in-built storage and is overlooking the gardens. There is one family bathroom with feature expose brick. The entire apartment gets a generous amount of natural light via the large sashed windows throughout the property. The development gives access to the communal gardens located to the rear of the building.

Located on Ford Square and is conveniently located close to many local hot spots including Brick Lane, Spitalfields, Shoreditch and within walking distance to the City and Whitechapel Station.

Features

- Two bedrooms
- One bathroom
- Bright interiors
- Overlooking Ford Square Gardens
- Sought after location

Ford Square,
London, E1



Second Floor

Total area (approx.): 68.4 sq. m (736.2 sq. ft)