



Palmers Road, E2

£600,000

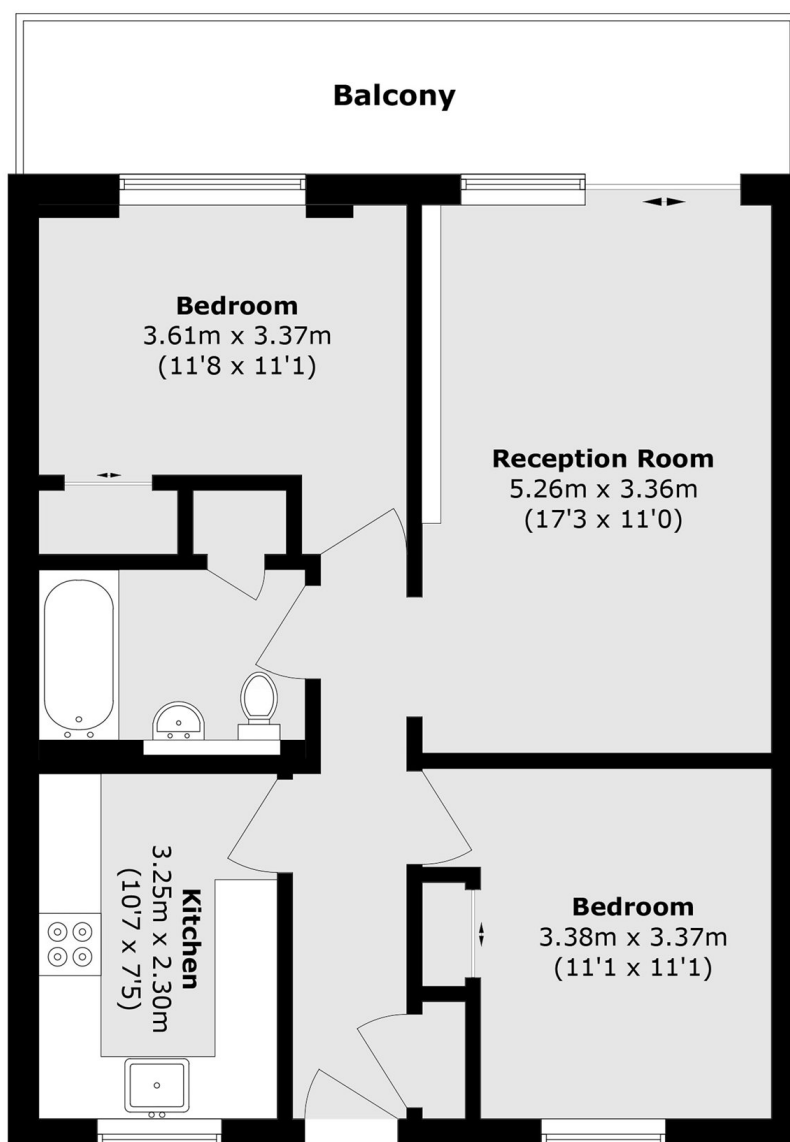
Two bedroom apartment with canal views in sought after development. The apartment has a large living room with ample space to dine. This area, along with the rest of the property, gets generous natural light and leads out onto the apartments private balcony which views straight onto Regents Canal and over to Mile End Park, The property includes a newly refurbished kitchen and bathroom. The property is a perfect option for first time buyers as its ready to move into straight away without the need to do any work.

Set on the sought after Palmers Road, the property gives convenient access to the amenities found in the close by Roman Road, Bethnal Green and Bow which include an array of boutique shops, cafe's, pubs, restaurants and many other entertainment venues. The famous Victoria Park and Regents Canal are close by for tranquil walks and Bow Road, Bethnal Green and Cambridge Heath station are nearby.

Features

- Two bedrooms
- Balcony with canal views
- New kitchen and bathroom
- Natural sunlight
- Secure underground parking
- Remote controlled heating

Palmers Road, London, E2



Total area (approx.): 62.4 sq. m (671.7 sq. ft)
Balcony area (approx.): 11.0 sq. m (118.4 sq. ft)