



## Temple Street, E2

£600,000

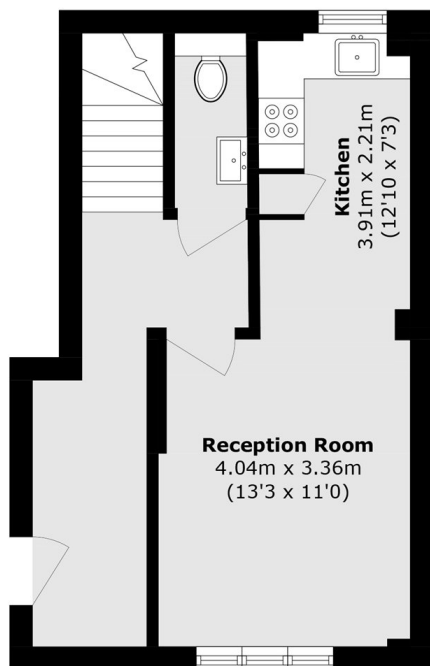
A three double bedroom, one bathroom + WC split level apartment in a secure block in a popular location. This dual aspect apartment has a large open plan living area with ample space to dine and a modern, fully integrated kitchen on the first floor along with the property's separate WC. On the ground floor the apartment has three double bedrooms, one of which gives access to the apartment's outside space. The family bathroom is also located here along with plenty of additional storage.

Located on the corner of Hackney Road and Temple Street this property benefits from both Broadway Market and Columbia Road's many artisan cafés, restaurants and shops under half a mile away. Bethnal Green underground and Cambridge Heath overground are under half a mile away with easy access into the City of London.

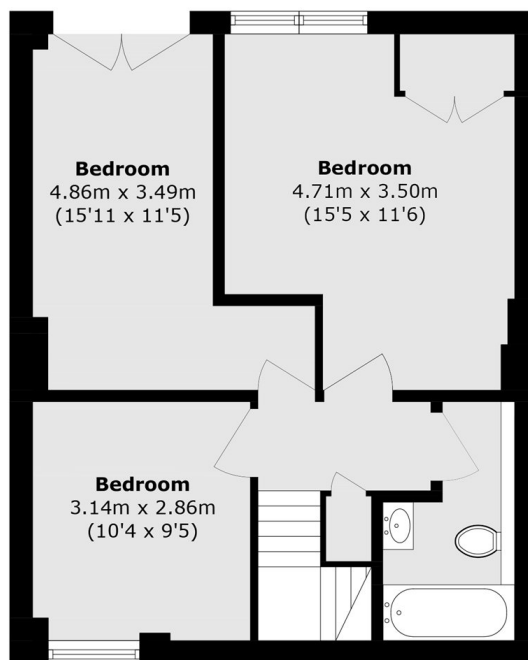
### Features

- Three Beds
- Modern family bathroom + WC
- Sought after location
- Private outside space
- Modern interiors

# Temple Street, London, E2



**Ground Floor**



**First Floor**

Total area (approx.): 87.5 sq. m (941.9 sq. ft)