



## Thurtle Road, E2

£475,000

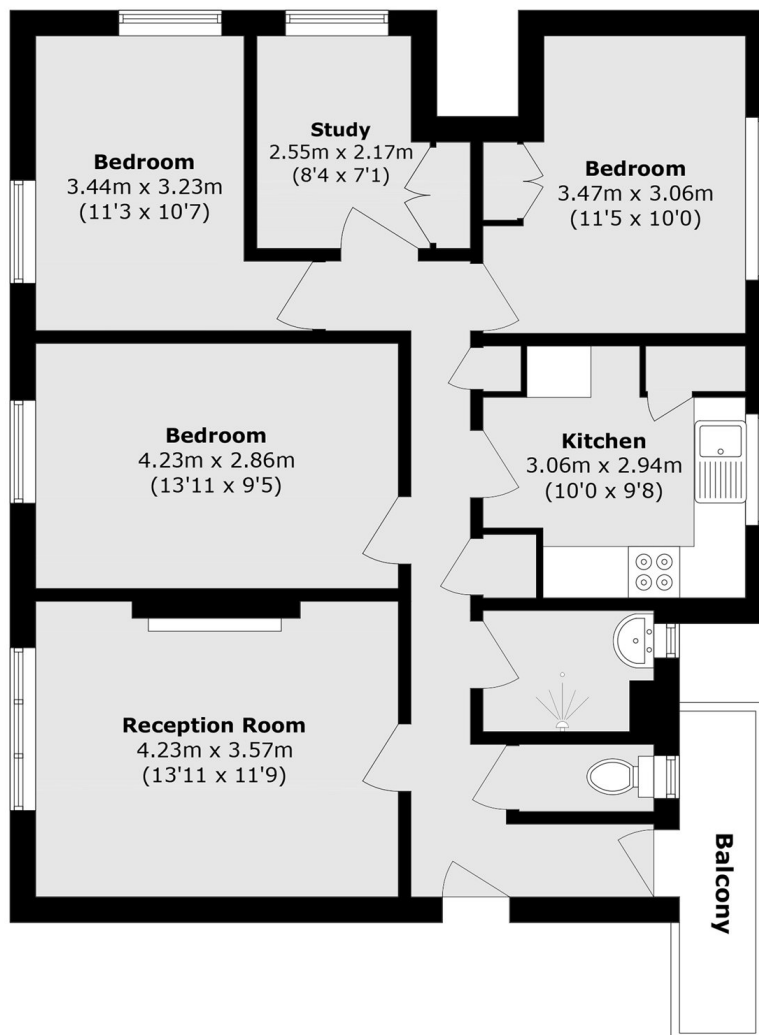
Well presented four bedroom apartment set within a popular location. The property has a spacious living room and a separate dine in kitchen with built in appliances. There are three double bedrooms with ample space for storage and a smaller fourth room which is a fair size single bedroom or a convenient space for a home office/study. The hallway has plenty of further storage and gives access to the shower room, separate WC and balcony. The entire property gets a generous amount of natural light due to it being dual aspect.

Godwin House is set in a popular location between Hackney Road and Kingsland Road with shops, cafes, and the Columbia Road Flower Market nearby. Haggerston Park and Regents Canal are within walking distance, and Hoxton Overground Station is very close by allowing for swift commute across the City.

### Features

- Four bedrooms
- Shower room and separate WC
- Generous natural light
- Sought after location
- Balcony

# Thurtle Road, London, E2



Total area (approx.): 77.5 sq. m (834.2 sq. ft)

Balcony area (approx.): 3.3 sq. m (35.5 sq. ft)