



## Drysdale Street, N1

£3,400 Per calendar month

A modern two bedroom two bathroom top floor apartment located in Timber Yard. This apartment which is located in a secure development has a semi open plan reception and kitchen area, two double bedrooms, two bathrooms and is available furnished.

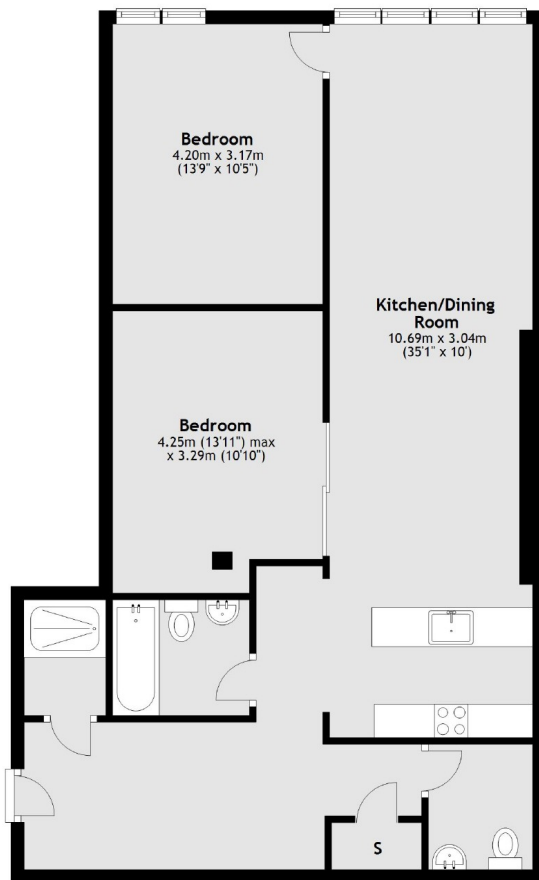
Located a very short distance to Hoxton Square this apartment is in the heart of Shoreditch/Old Street with a host of bars, cafes and restaurants.

### Features

Modern  
Two Double Bedroom  
Two Bathroom  
Furnished  
Top Floor  
Great Location

# Drysdale Street, London, N1

## Fourth Floor



Total area: approx. 83.8 sq. metres (902.1 sq. feet)